



MCARTHUR'S
YARD

1, 2 & 3 BEDROOM APARTMENTS, SPIKE ISLAND, BRISTOL





LIFE ON THE HARBOURSIDE

Situated on Bristol's legendary harbourside, McArthur's Yard is a collection of one, two and three-bedroom apartments and duplexes arranged over three elegantly designed buildings. The stylish and highly specified homes at this contemporary new development allow residents to enjoy all of Bristol's personality and character close to the serenity of the water.

Brought to you by award-winning Guinness Homes, the development is one of the last remaining undeveloped sites on the harbourside. Many of the properties benefit from wonderful views and are ideally located within a short distance of the rest of the city.



ETCHED IN HISTORY

MINUTES FROM THE HISTORIC SS GREAT BRITAIN

Just a stone's throw from the water and the SS Great Britain, you can sense the cultural significance of Bristol's harbourside from the moment you arrive at McArthur's Yard. Designed by Isambard Kingdom Brunel, the ship – and the dockyard on which it was built, are one of the wonders of the industrial world.

Once a busy dock where sailors and merchants would trade goods and set sail for voyages of discovery, the location is now a blossoming creative hub, home to leading animation studio Aardman and Spike Island, famed for its arts centre.

McArthur's Yard is perfectly placed to explore the harbourside and beyond. Simply hop on the Metro bus, take a tranquil trip across the harbour on one of the water ferries or take a leisurely stroll from your front door.

Clifton

The Triangle

Brandon Hill

Park Street

SS
Great
Britain

College
Green

Cabot
Circus

Millennium
Square

Queen
Square

Temple
Quay

Wapping
Wharf



EVERYTHING YOU NEED ON YOUR DOORSTEP

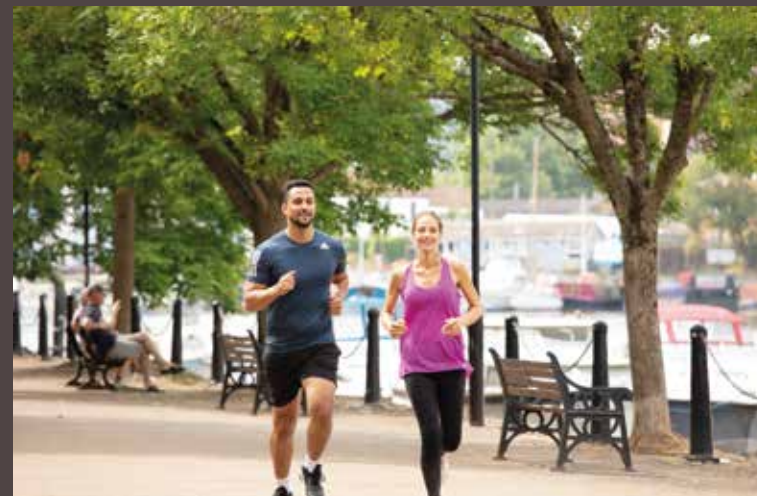
McArthur's Yard's enviable location means that you are right in the heart of a thriving community. Whether you're after quality food, the theatre, galleries, movies, sports or supermarkets, it is all located within easy reach.

During the summer you can enjoy a range of activities, such as paddleboarding along the water. Maybe you'll end up at Wapping Wharf – a new vibrant quarter just a short walk away, with cafés, trendy independent bars and first-class restaurants, such as the acclaimed Tare or Box-E. If you're a morning person, why not pop on the Bristol waterbus and enjoy a coffee at Broken Dock?

Those who enjoy the colder nights will love the local cosy pubs, especially The Cottage – a traditional and snug inn which boasts stunning views across the harbour.

There are several local gyms, but those who prefer a scenic run, walk or cycle will adore passing the likes of the amphitheatre, Millennium Square or Cathedral Walk on some of the many exciting routes.

The harbourside provides an idyllic lifestyle amongst the attractive aesthetic of the dockyard, SS Great Britain, and historic cranes.





THE COSMOPOLITAN CAPITAL OF THE SOUTH WEST

Whether it's shopping, food, music or culture, Bristol is truly the cosmopolitan capital of the South West, offering everything you could want from a major city. If high-end fashion is your thing, you will love pottering around Cabot Circus, which boasts over 120 high-street stores and designer brands – including Harvey Nichols and House of Fraser.

Foodies will be in heaven, with a plethora of options to suit any style or mood; from the fine-dining experience of Michelin star restaurants such as Bulrush or Paco Tapas, to the authentic street food served at St Nicholas Market.

When summer arrives, the buzz is palpable. There's so much to do, like visiting the famous pubs, theatres, clubs, or soaking in the atmosphere at one of the city's iconic festivals, such as Bristol Harbour Festival or The Bristol International Balloon Fiesta.

If you are a sports fan, there are countless gyms and clubs to join, in addition to professional football, rugby and cricket on display across a number of venues, including Ashton Gate and Bristol County Cricket Ground.



A DIVERSE LIFESTYLE

One of Bristol's greatest qualities is the diversity of different areas within the city, allowing for a range of experiences. Located just a short drive away is the picturesque Clifton Village, where boutiques, pubs and independent shops are plentiful for a magical day of exploring. There's also North Street, Bedminster, which is home to the Tobacco Factory – a warm and welcoming hub offering exhibitions, markets, food and live music.

If a moment's peace is what you crave, The Downs and Ashton Court Estate are a must-visit. Despite only being a short distance from the city centre, they feel like you are well and truly in the countryside. There's an abundance to scout out too – such as the Observatory or mesmeric views of the Clifton Suspension Bridge.



A CITY THRIVING ON ALL FRONTS

A hotbed for creatives, Bristol is renowned for its colourful and diverse music and arts scene. With a cultural legacy that spreads internationally, you only need to take a stroll to see a manifestation of that reputation, with the likes of Banksy's world-famous street art in Stokes Croft and beyond.

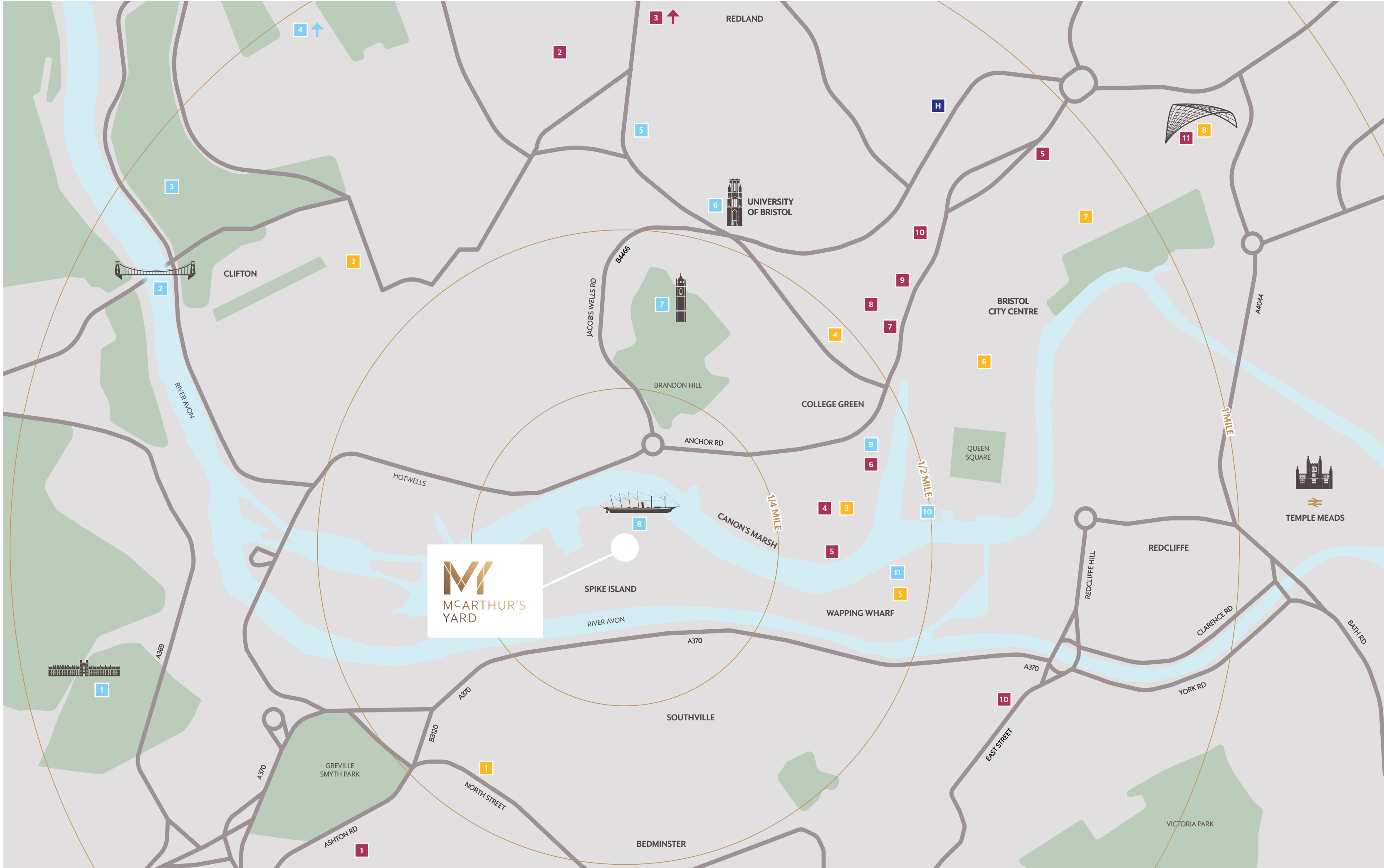
It's not only the arts scene that thrives in Bristol. In fact, the city's multi-faceted economy is home to over 18,000 businesses – and more than a third of the UK-owned FTSE 100 companies have operations in the area.

Tech companies are flourishing, accounting for 36% of the city's high-growth business. In addition, Bristol was recently named the UK's second-best city for tech recruitment.

It is also the home to two high-class universities, with the University of Bristol being recognised globally, currently in the top 10 in the country* and second in the UK for general engineering.**

*Times Higher Education World University Rankings (https://www.timeshighereducation.com/world-university-rankings/2023/world-ranking#/page/0/length/25/locations/GBR/sort_by/rank/sort_order/asc/cols/stats)

**The Complete University Guide (<https://www.thecompleteuniversityguide.co.uk/league-tables/rankings/general-engineering>)



PERFECTLY LOCATED

FOOD, DRINK & SHOPPING

1. North Street
2. Clifton Village
3. Harbourside
4. Park Street
5. Wapping Wharf
6. Old City
7. Broadmead
8. Cabot Circus

ATTRACTIONS

1. Ashton Court
2. Clifton Suspension Bridge
3. Clifton Observatory
4. The Downs
5. Royal West of England Academy
6. Bristol Museum & Art Gallery
7. Cabot Tower
8. SS Great Britain
9. Watershed
10. Arnolfini
11. M Shed

LEISURE

1. Ashton Gate Stadium
2. Bristol Lido
3. Everyman Cinema
4. Lane 7
5. Pure Gym
6. Watershed Cinema
7. Bristol Hippodrome
8. O2 Academy
9. Bristol Beacon
10. Luxe Fitness
11. Showcase Cinema



ROAD, RAIL, AIR.

WELL CONNECTED

McArthur's Yard is conveniently close to all of Bristol's important transport hubs, allowing you to get around the city in no time at all, whilst still being able to get out at a moment's notice.

The city centre and Bristol Temple Meads Railway Station are both within a 20-minute walk, giving you speedy access to London and beyond. If overseas travel is what you desire, getaways to the likes of Paris, Dubai and New York are quick and stress free, with Bristol International Airport only a 19-minute car journey away.



TRAIN

Bath Spa	11 mins
Swindon	39 mins
Cardiff Central	47 mins
Reading	1hr 8 mins
Birmingham New Street	1hr 21 mins
London Paddington	1hr 35 mins



ROAD

Superstore	6 mins
M32	10 mins
Bristol Airport	19 mins



WALK

Wapping Wharf	8 mins
Park Street	14 mins (via Ferry)
Tobacco Factory	15 mins
Clifton Village	21 mins (via Ferry)
Bristol Temple Meads	20 mins
Temple Quay	24 mins
Cabot Circus	28 mins
Ashton Court	30 mins

Source:
Google Maps and thetrainline.com
Oct 2022



DEVELOPMENT OVERVIEW

McArthur's Yard, once known as McArthur's Warehouse, was the former headquarters of the McArthur's Group – a Bristol-based metal merchant founded in the 1860s. Originally built as a malt house, the building fell into disrepair after being left forgotten for over 20 years. The site is now set to become a building development of the future for Bristol residents.

The McArthur's Yard site was resurrected with sustainability at the forefront; bricks from the existing site have been reused, with two-thirds of the wall being retained whilst being structurally reinforced for longevity. Bath Stone slabs from the original site are also being recycled, as are the grey stone setts, both of which are implemented along the side entrance of Block A, providing a welcome reminder of the legacy of this historic development.

Close to parks, green spaces and the harbourside, the site's ecological footprint has been considered with the inclusion of bird and bat boxes on the landscaping. Swift-friendly bricks have also been added along the graving dockside – giving a warm home to a few extra residents.

One of the more unique material features of McArthur's Yard is the Welsh blue pennant kerb laid at the front of the site, coupled with the blue-grey drag-faced clay setts running from Block A down and around the famous graving dock. This adds a wonderful juxtaposition of old cobbled streets and new-build modern architecture, perfectly encapsulating the foundations of Bristol's industrial past and exciting future. Welcome, to McArthur's Yard.

SITE PLAN

MCARTHUR'S YARD



FIND YOUR HOME

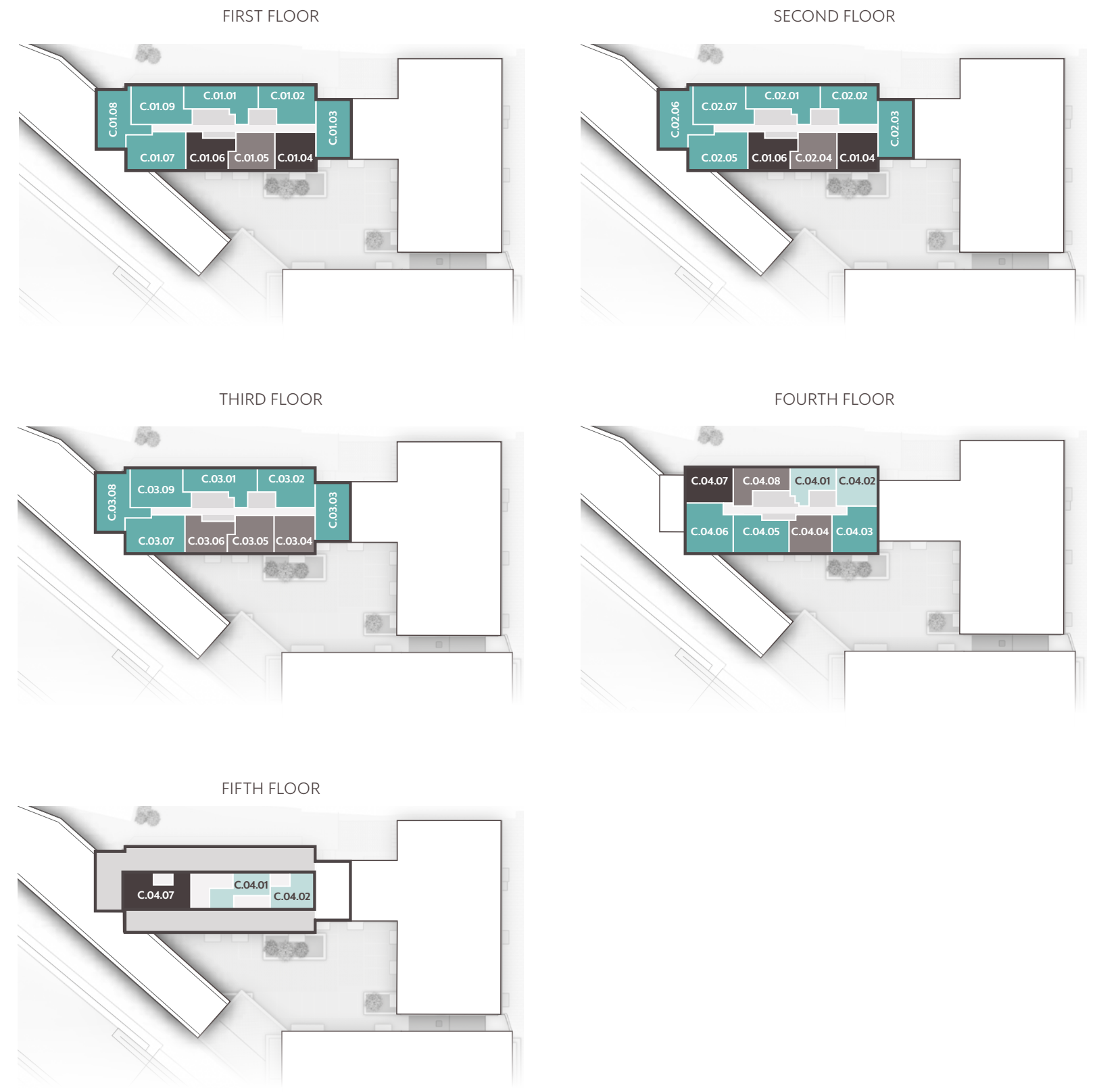
BUILDING B



- ONE BEDROOM
- TWO BEDROOM
- THREE BEDROOM
- TWO BEDROOM DUPLEX
- THREE BEDROOM DUPLEX

FIND YOUR HOME

BUILDING C



- ONE BEDROOM
- TWO BEDROOM
- THREE BEDROOM
- TWO BEDROOM DUPLEX
- THREE BEDROOM DUPLEX

ONE BEDROOM

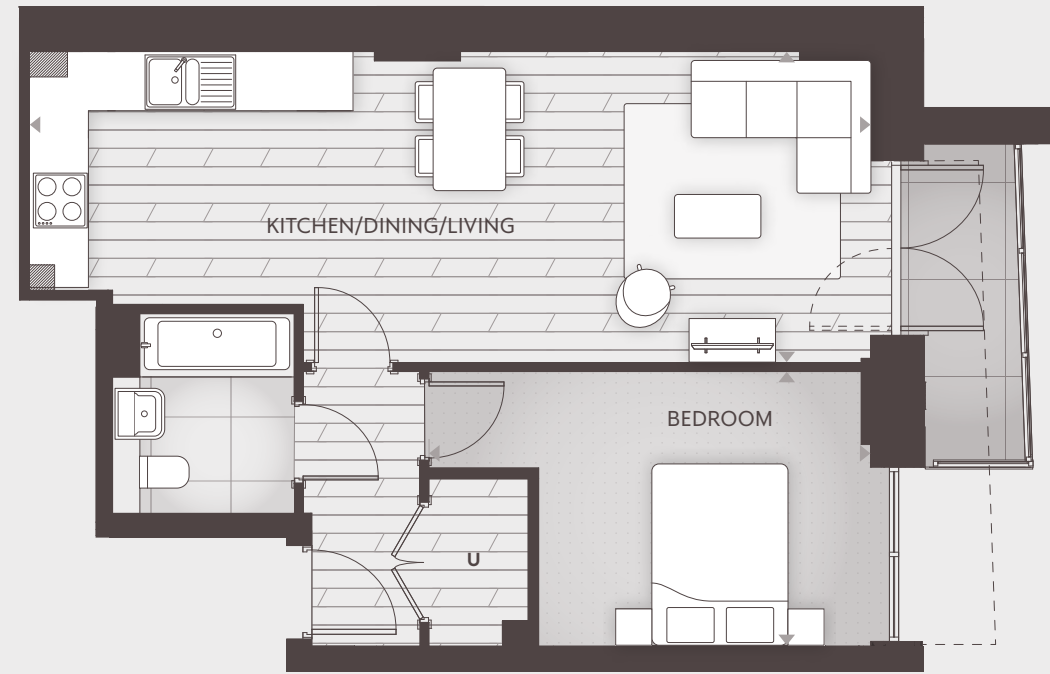
BUILDING B

McARTHUR'S YARD

McARTHUR'S YARD

ONE BEDROOM APARTMENT - TYPE FT-09

BUILDING B



Floor 2 plan shown.
 --- Indicates balcony to floor 3 only.
 Please note window configuration to floors 3, 4 and 5 vary.
 Juliet balcony to floors 4 and 5. Please consult your sales advisor.

Total Internal Area

54m² (581 ft²)

Kitchen/Dining/Living

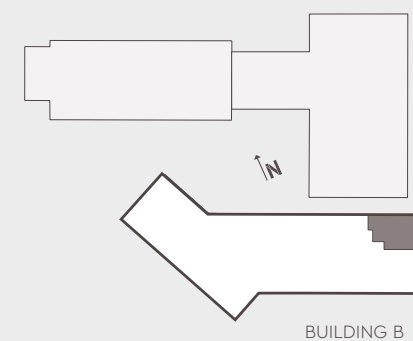
9269.5mm x 3426mm

Bedroom

4866mm x 3024.5mm

Floor Apt. No. Spec

5th	B.05.01	S+	G
4th	B.04.01	S	G
3rd	B.03.01	S	G
2nd	B.02.01	S	G



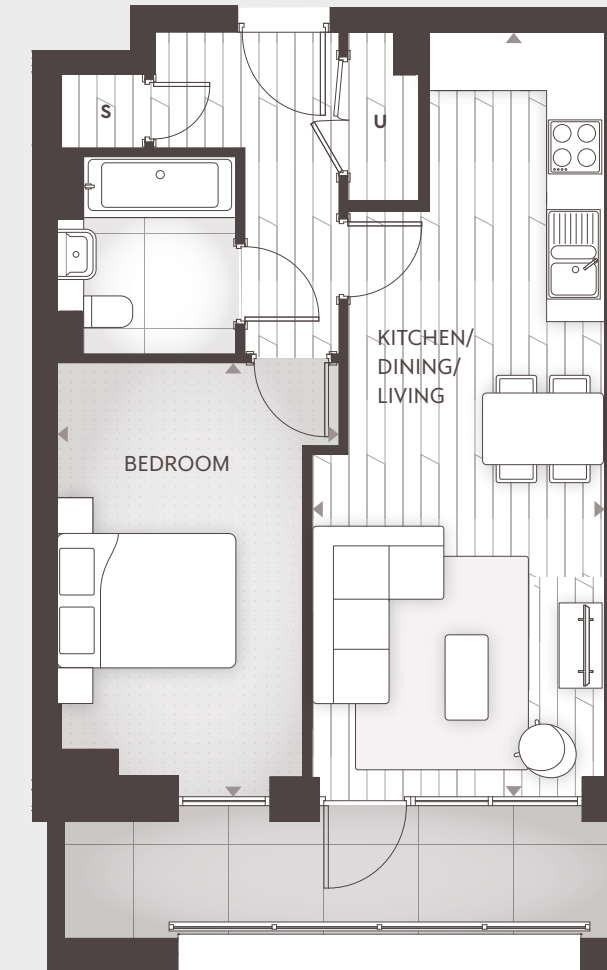
Internal Finish Specification **S** = Silver **S+** = Silver Plus Kitchen Specification **G** = Gold

U = Utility Cupboard

Note: - these dimensions are accurate to within +/- 50mm. They are not intended to be used for carpet sizes, appliance spaces or items of furniture. All dimensions taken to the widest point. Kitchen layouts are indicative.

ONE BEDROOM APARTMENT - TYPE FT-11

BUILDING B



Total Internal Area

50m² (538 ft²)

Kitchen/Dining/Living

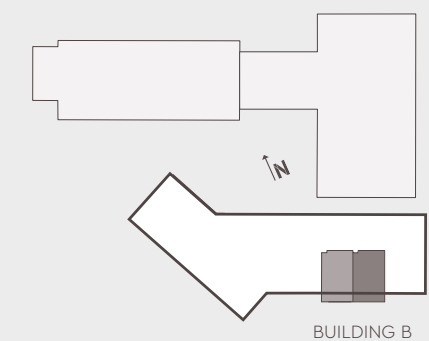
8320.5mm x 3270mm

Bedroom

4630.5mm x 2750mm

Floor Apt. No. Spec Apt. No. Spec

5th	B.05.03	S+	G	B.05.04	S+	G
4th	B.04.03	S	G	B.04.04	S	G
3rd	B.03.03	S	G	B.03.04	S	G



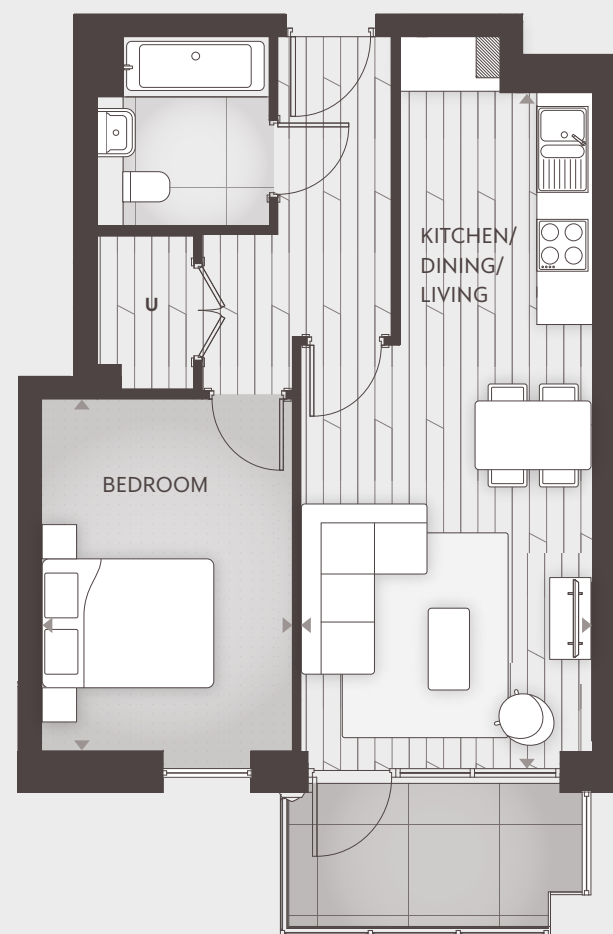
Internal Finish Specification **S** = Silver **S+** = Silver Plus Kitchen Specification **G** = Gold

U = Utility Cupboard **S** = Storage

Note: - these dimensions are accurate to within +/- 50mm. They are not intended to be used for carpet sizes, appliance spaces or items of furniture. All dimensions taken to the widest point. Kitchen layouts are indicative.

ONE BEDROOM APARTMENT - TYPE FT-13

BUILDING B



Total Internal Area

50m² (538 ft²)

Kitchen/Dining/Living

7670.5mm x 3397mm

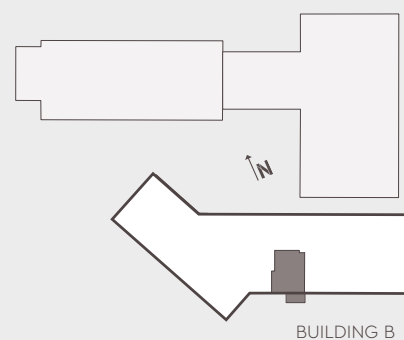
Bedroom

4102.5mm x 2920mm

Floor Apt. No. Spec

4th B.04.05 S G

3rd B.03.05 S G



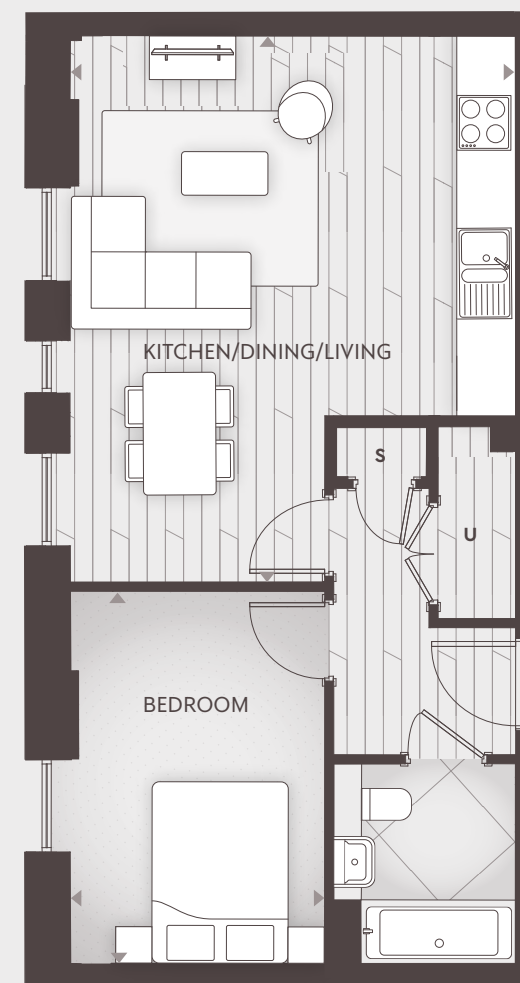
Internal Finish Specification **S** = Silver Kitchen Specification **G** = Gold

U = Utility Cupboard

Note: - these dimensions are accurate to within +/- 50mm. They are not intended to be used for carpet sizes, appliance spaces or items of furniture. All dimensions taken to the widest point. Kitchen layouts are indicative.

ONE BEDROOM APARTMENT - TYPE FT-16

BUILDING B



Total Internal Area

51m² (549 ft²)

Kitchen/Dining/Living

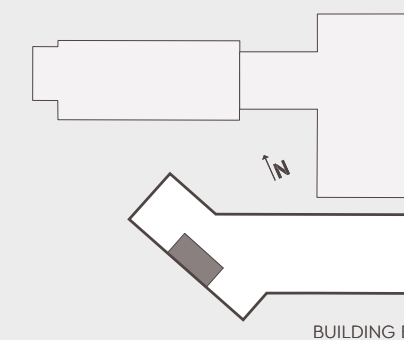
6021mm x 4920mm

Bedroom

4102.5mm x 2815mm

Floor Apt. No. Spec

2nd B.02.08 S G



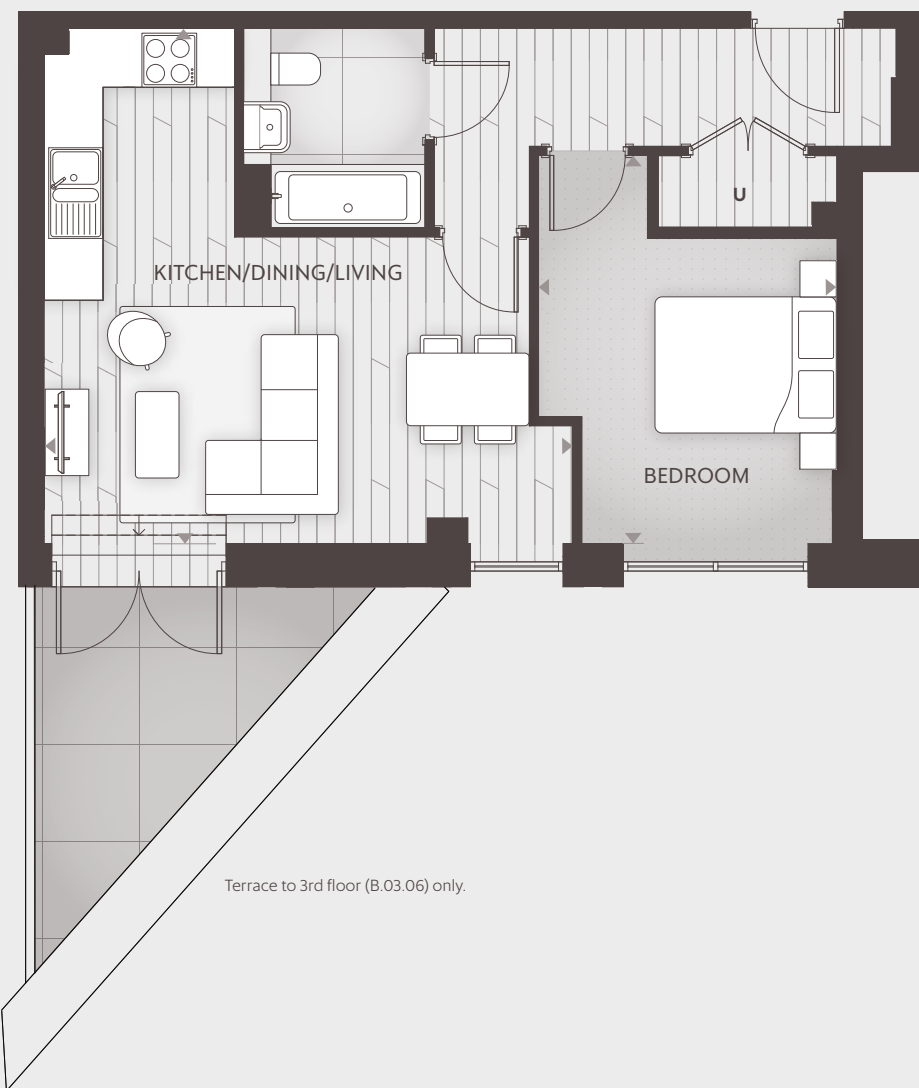
Internal Finish Specification **S** = Silver Kitchen Specification **G** = Gold

U = Utility Cupboard **S** = Storage

Note: - these dimensions are accurate to within +/- 50mm. They are not intended to be used for carpet sizes, appliance spaces or items of furniture. All dimensions taken to the widest point. Kitchen layouts are indicative.

ONE BEDROOM APARTMENT - TYPE FT-28

BUILDING B



Total Internal Area

50m² (538 ft²)

Kitchen/Dining/Living

5830mm x 5681mm

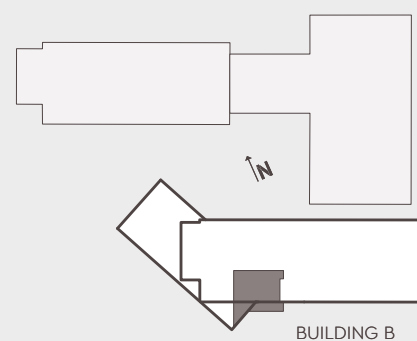
Bedroom

3367.5mm x 3290mm

Floor Apt. No. Spec

4th B.04.06 S G

3rd B.03.06 S G



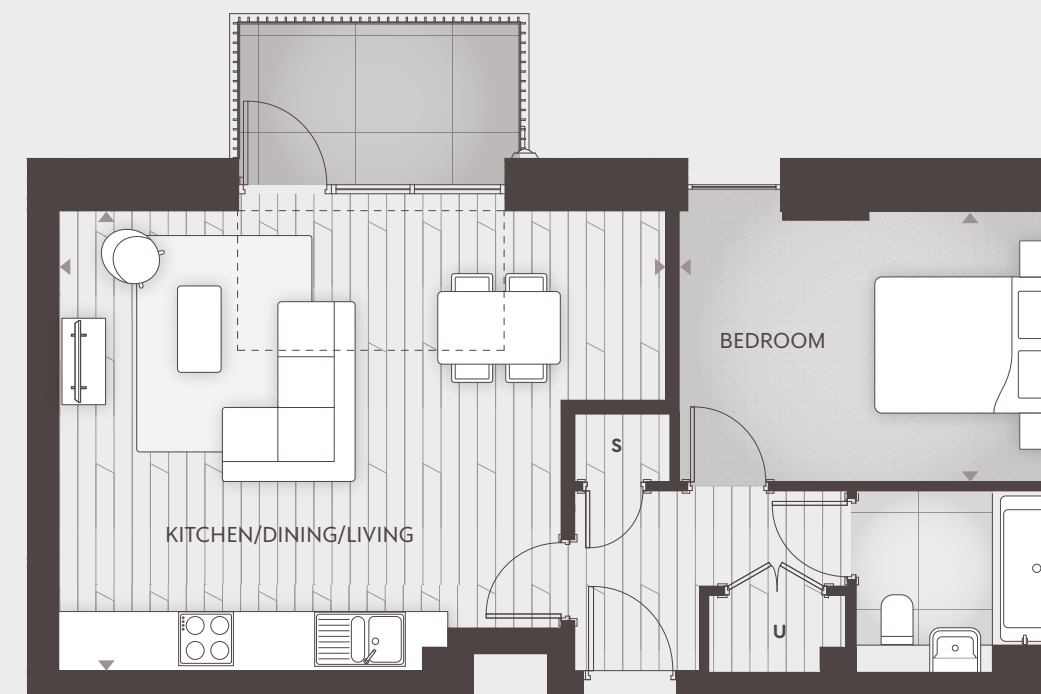
Internal Finish Specification **S** = Silver Kitchen Specification **G** = Gold

U = Utility Cupboard

Note: - these dimensions are accurate to within +/- 50mm. They are not intended to be used for carpet sizes, appliance spaces or items of furniture. All dimensions taken to the widest point. Kitchen layouts are indicative.

ONE BEDROOM APARTMENT - TYPE FT-53

BUILDING B



Total Internal Area

55m² (592 ft²)

Kitchen/Dining/Living

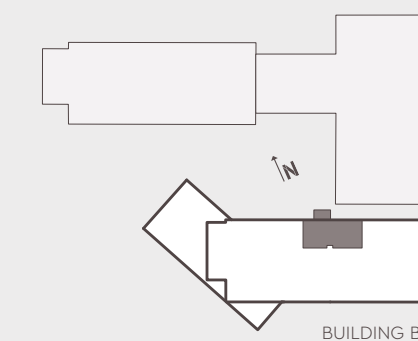
6687mm x 5065.5mm

Bedroom

4153mm x 2985.5mm

Floor Apt. No. Spec

5th B.05.08 S+ G



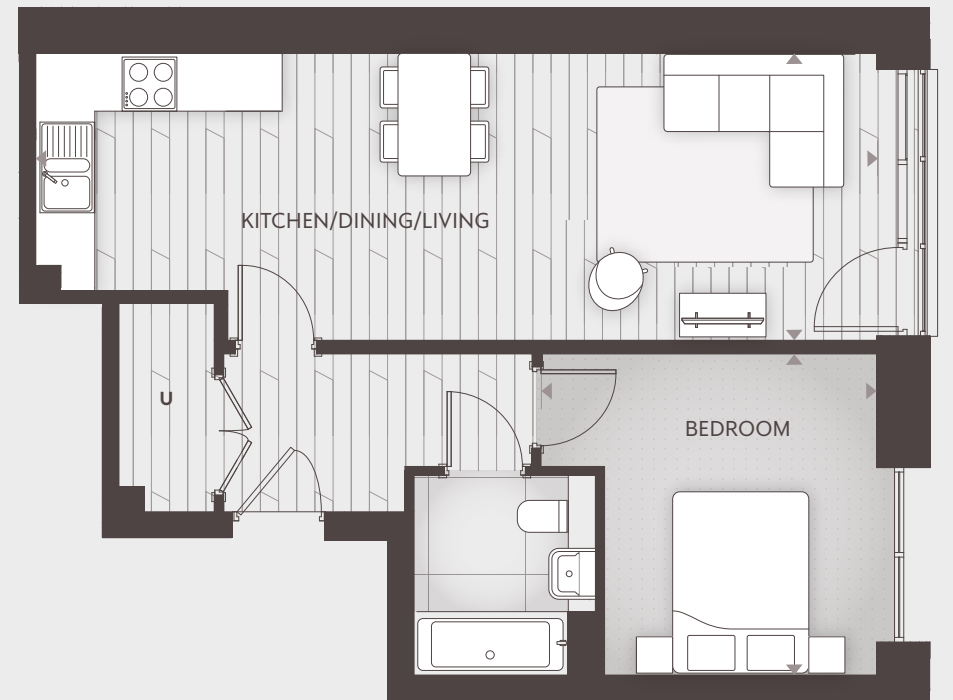
Internal Finish Specification **S+** = Silver Plus Kitchen Specification **G** = Gold

--- Rooflight **U** = Utility Cupboard **S** = Storage

Note: - these dimensions are accurate to within +/- 50mm. They are not intended to be used for carpet sizes, appliance spaces or items of furniture. All dimensions taken to the widest point. Kitchen layouts are indicative.

ONE BEDROOM APARTMENT - TYPE FT-67

BUILDING B



Total Internal Area

54m² (581 ft²)

Kitchen/Dining/Living

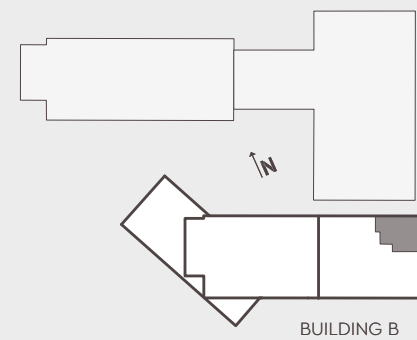
9269.5mm x 3175.5mm

Bedroom

3700.5mm x 3540mm

Floor Apt. No. Spec

6th **B.06.01** **S+** **G**



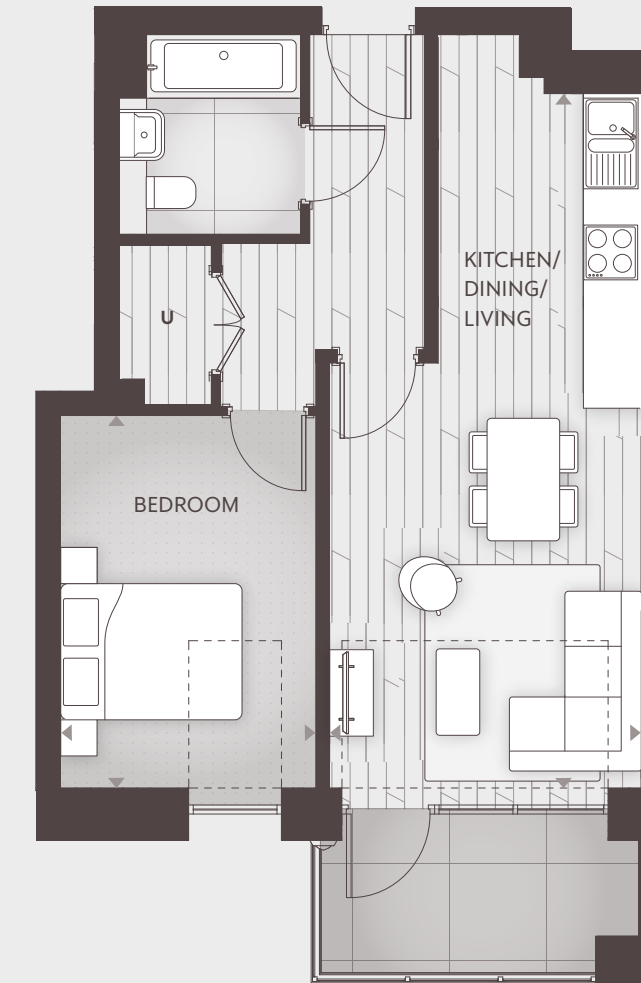
Internal Finish Specification **S+** = Silver Plus Kitchen Specification **G** = Gold

J = Juliet Balcony **U** = Utility Cupboard

Note: - these dimensions are accurate to within +/- 50mm. They are not intended to be used for carpet sizes, appliance spaces or items of furniture. All dimensions taken to the widest point. Kitchen layouts are indicative.

ONE BEDROOM APARTMENT - TYPE FT-82

BUILDING B



Total Internal Area

50m² (538 ft²)

Kitchen/Dining/Living

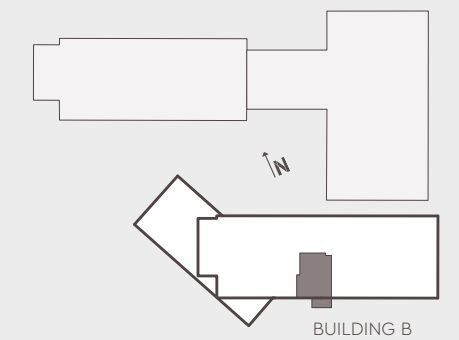
7650.5mm x 3452mm

Bedroom

4102.5mm x 2815mm

Floor Apt. No. Spec

5th **B.05.05** **S+** **G**



Internal Finish Specification **S+** = Silver Plus Kitchen Specification **G** = Gold

--- Rooflight **U** = Utility Cupboard

Note: - these dimensions are accurate to within +/- 50mm. They are not intended to be used for carpet sizes, appliance spaces or items of furniture. All dimensions taken to the widest point. Kitchen layouts are indicative.

TWO BEDROOM

BUILDING B

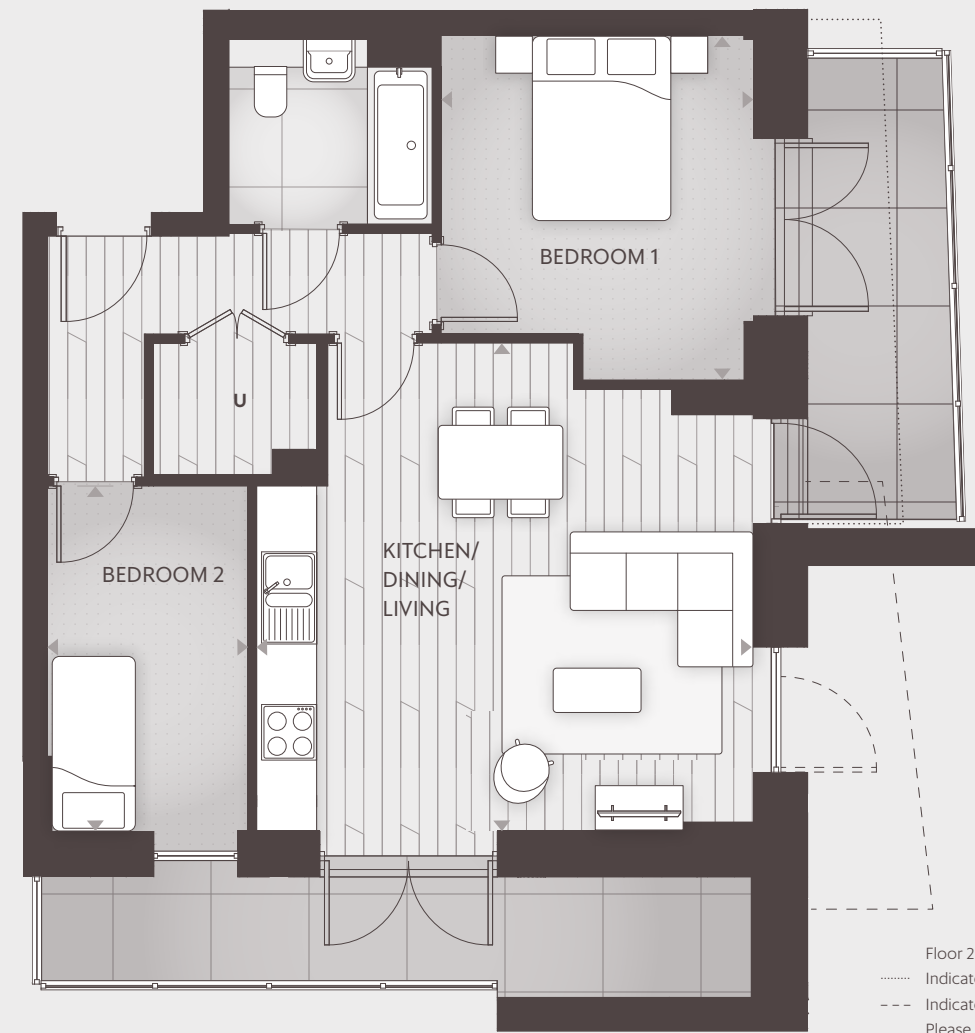
McARTHUR'S YARD

McARTHUR'S YARD



TWO BEDROOM APARTMENT - TYPE FT-10

BUILDING B



Floor 2 plan shown.
 Indicates balcony and french door to floor 3.
 --- Indicates balcony and french doors to floors 4 and 5.
 Please note window configuration to floors 3, 4 and 5 vary.
 Please consult your sales advisor.

Total Internal Area

62m² (667 ft²)

Kitchen/Dining/Living

5386mm x 5287.5mm

Bedroom 1

3740mm x 3386mm

Bedroom 2

3745.5mm x 2170mm

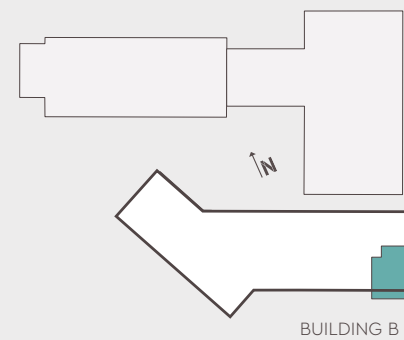
Floor Apt. No. Spec

5th **B.05.02** **S+** **G**

4th **B.04.02** **S** **G**

3rd **B.03.02** **S** **G**

2nd **B.02.02** **S** **G**



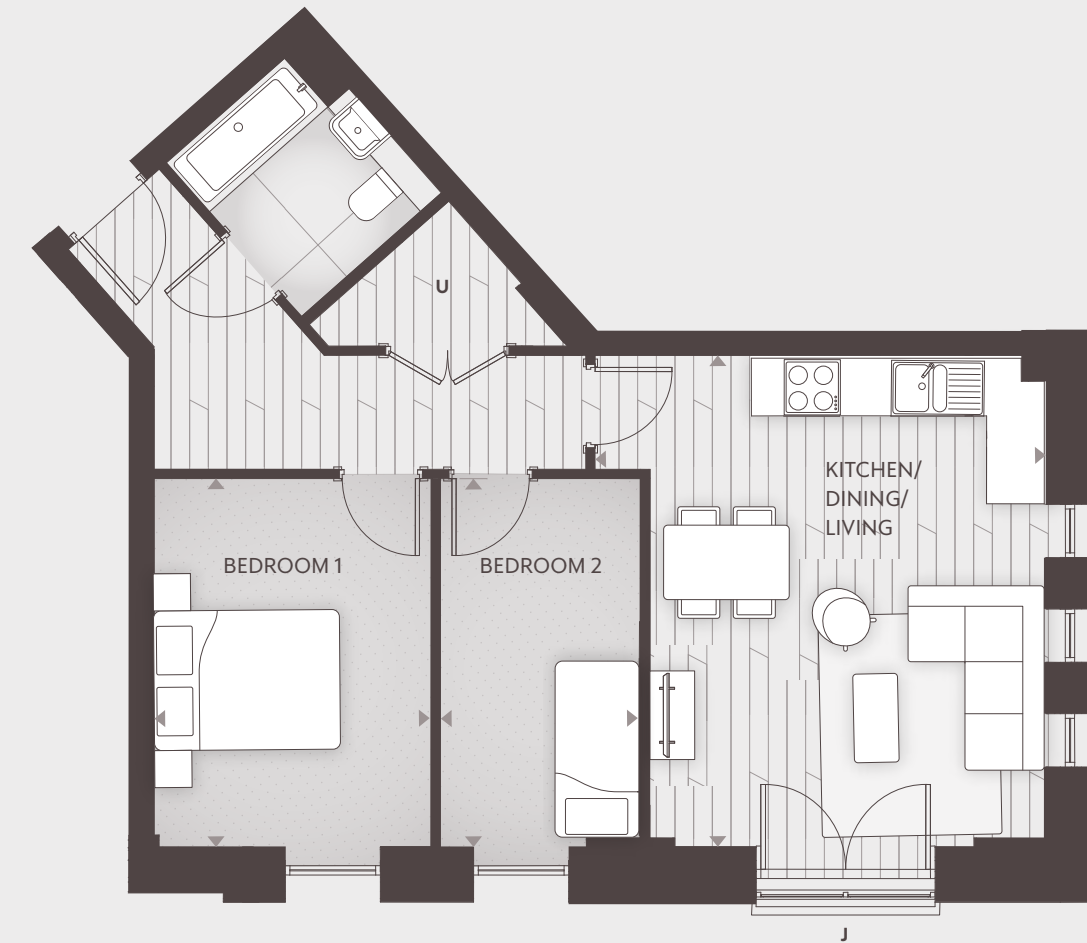
Internal Finish Specification **S** = Silver **S+** = Silver Plus Kitchen Specification **G** = Gold

U = Utility Cupboard

Note: - these dimensions are accurate to within +/- 50mm. They are not intended to be used for carpet sizes, appliance spaces or items of furniture. All dimensions taken to the widest point. Kitchen layouts are indicative.

TWO BEDROOM APARTMENT - TYPE FT-15

BUILDING B



Total Internal Area

61m² (657 ft²)

Kitchen/Dining/Living

5288mm x 4857.5mm

Bedroom 1

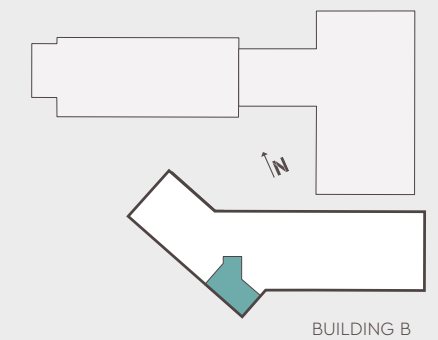
3963mm x 2975mm

Bedroom 2

3963mm x 2152.5mm

Floor Apt. No. Spec

2nd **B.02.07** **S+** **G**



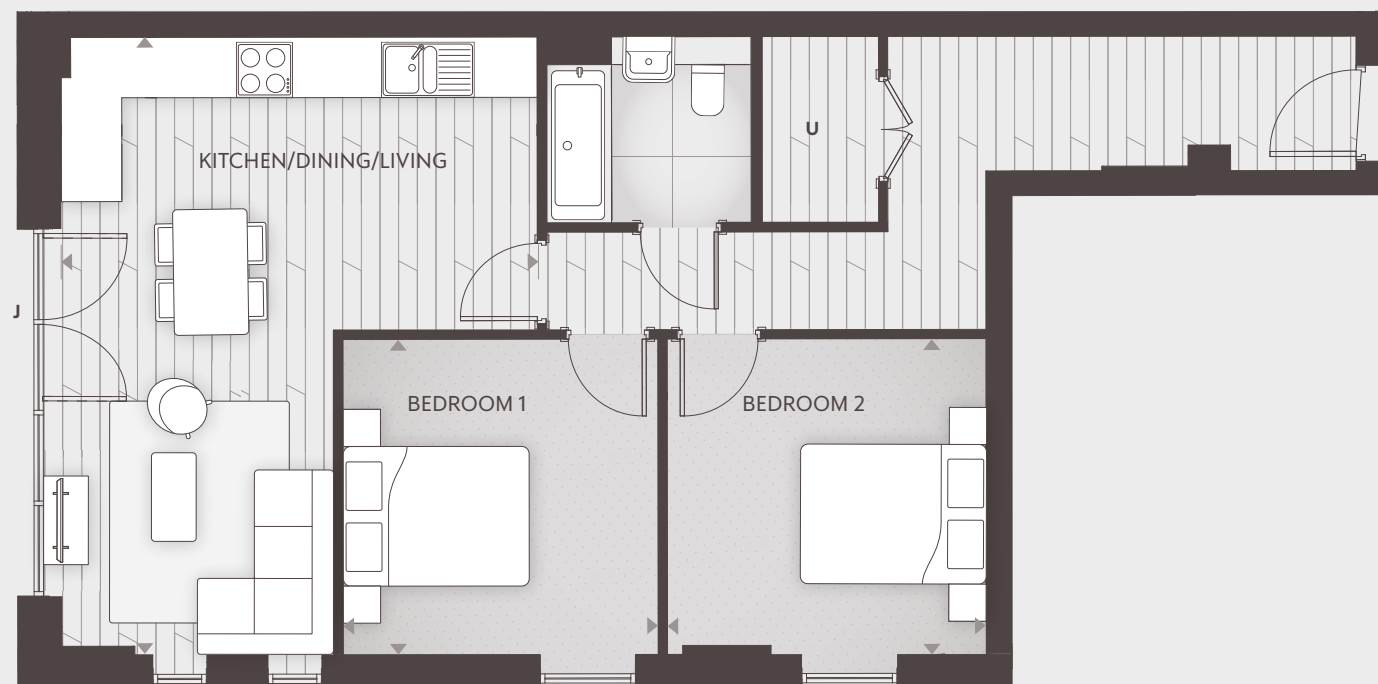
Internal Finish Specification **S+** = Silver Plus Kitchen Specification **G** = Gold

J = Juliet Balcony **U** = Utility Cupboard

Note: - these dimensions are accurate to within +/- 50mm. They are not intended to be used for carpet sizes, appliance spaces or items of furniture. All dimensions taken to the widest point. Kitchen layouts are indicative.

TWO BEDROOM APARTMENT - TYPE FT-17

BUILDING B



Total Internal Area

72m² (775 ft²)

Kitchen/Dining/Living

6647.5mm x 5111.5mm

Bedroom 1

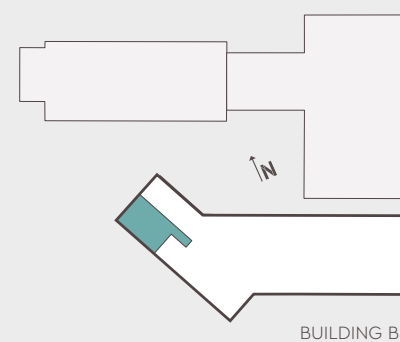
3397.5mm x 3385mm

Bedroom 2

3428.5mm x 3397.5mm

Floor Apt. No. Spec

2nd **B.02.09** **S** **G**



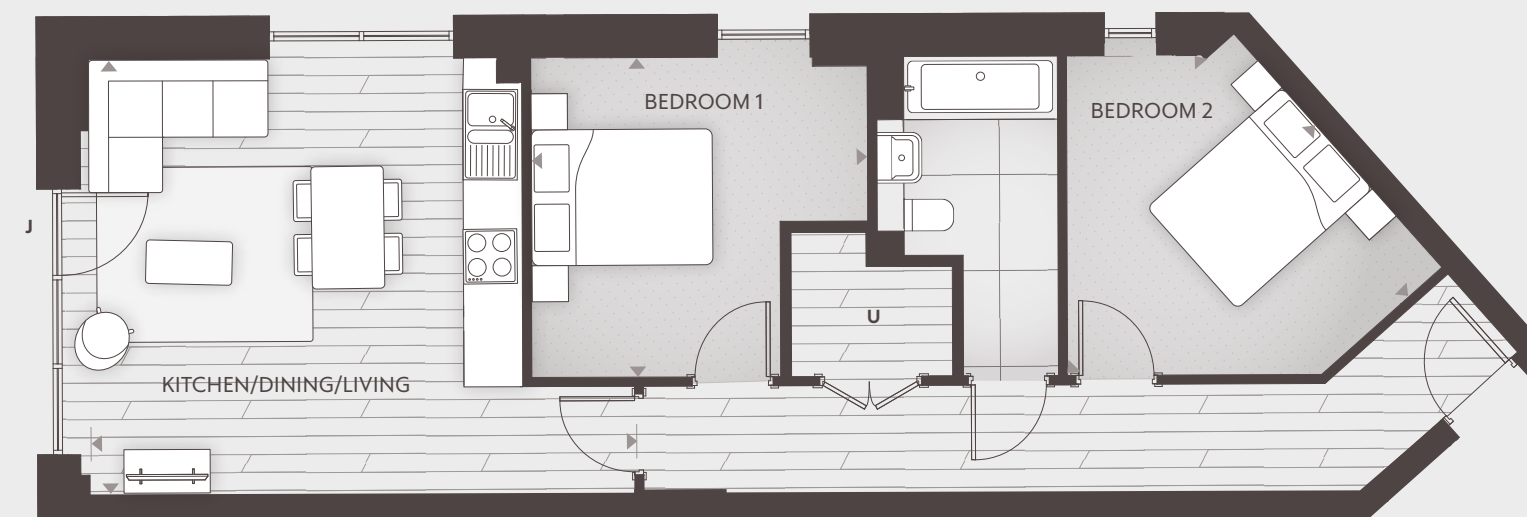
Internal Finish Specification **S** = Silver Kitchen Specification **G** = Gold

J = Juliet Balcony U = Utility Cupboard

Note: - these dimensions are accurate to within +/- 50mm. They are not intended to be used for carpet sizes, appliance spaces or items of furniture. All dimensions taken to the widest point. Kitchen layouts are indicative.

TWO BEDROOM APARTMENT - TYPE FT-18

BUILDING B



Total Internal Area

70m² (753 ft²)

Kitchen/Dining/Living

6121.5mm x 4826mm

Bedroom 1

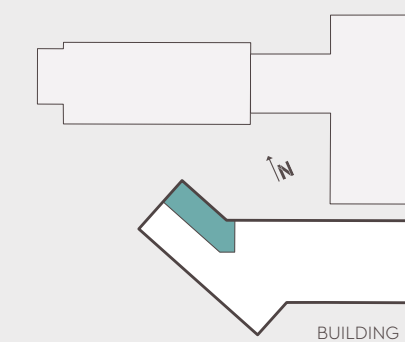
3720mm x 3530mm

Bedroom 2

3560mm x 3530mm

Floor Apt. No. Spec

2nd **B.02.10** **S** **G**



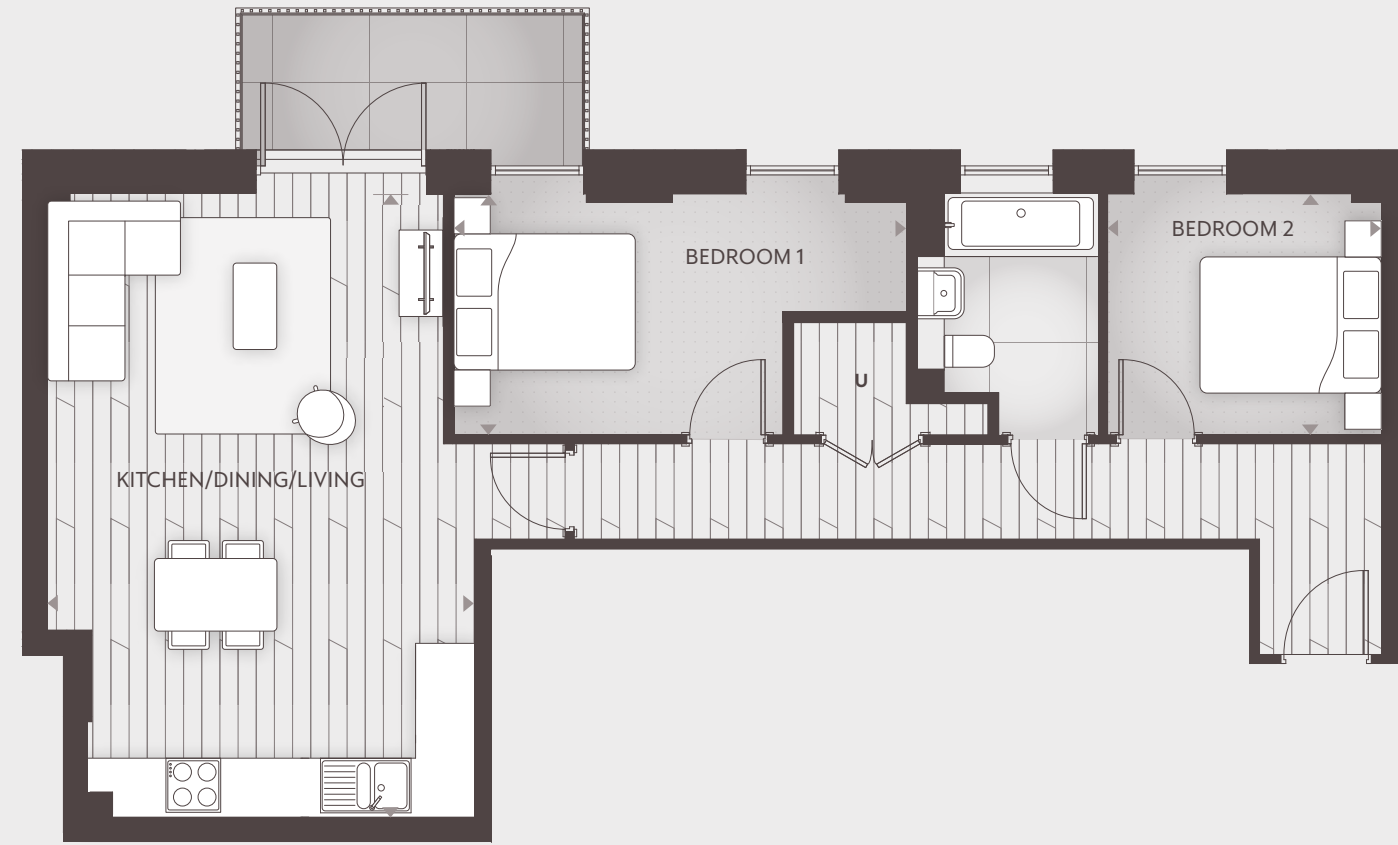
Internal Finish Specification **S** = Silver Kitchen Specification **G** = Gold

J = Juliet Balcony U = Utility Cupboard

Note: - these dimensions are accurate to within +/- 50mm. They are not intended to be used for carpet sizes, appliance spaces or items of furniture. All dimensions taken to the widest point. Kitchen layouts are indicative.

TWO BEDROOM APARTMENT - TYPE FT-19

BUILDING B



Total Internal Area

71m² (764 ft²)

Kitchen/Dining/Living

6877.5mm x 4708.5mm

Bedroom 1

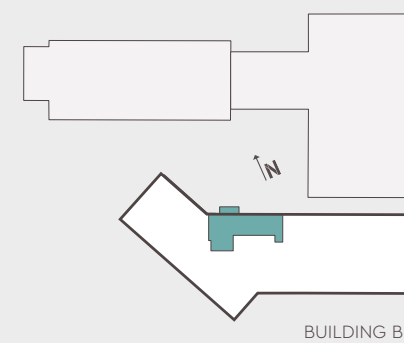
5020mm x 2662.5mm

Bedroom 2

3024.5mm x 2662.5mm

Floor Apt. No. Spec

2nd **B.02.11** **S** **G**



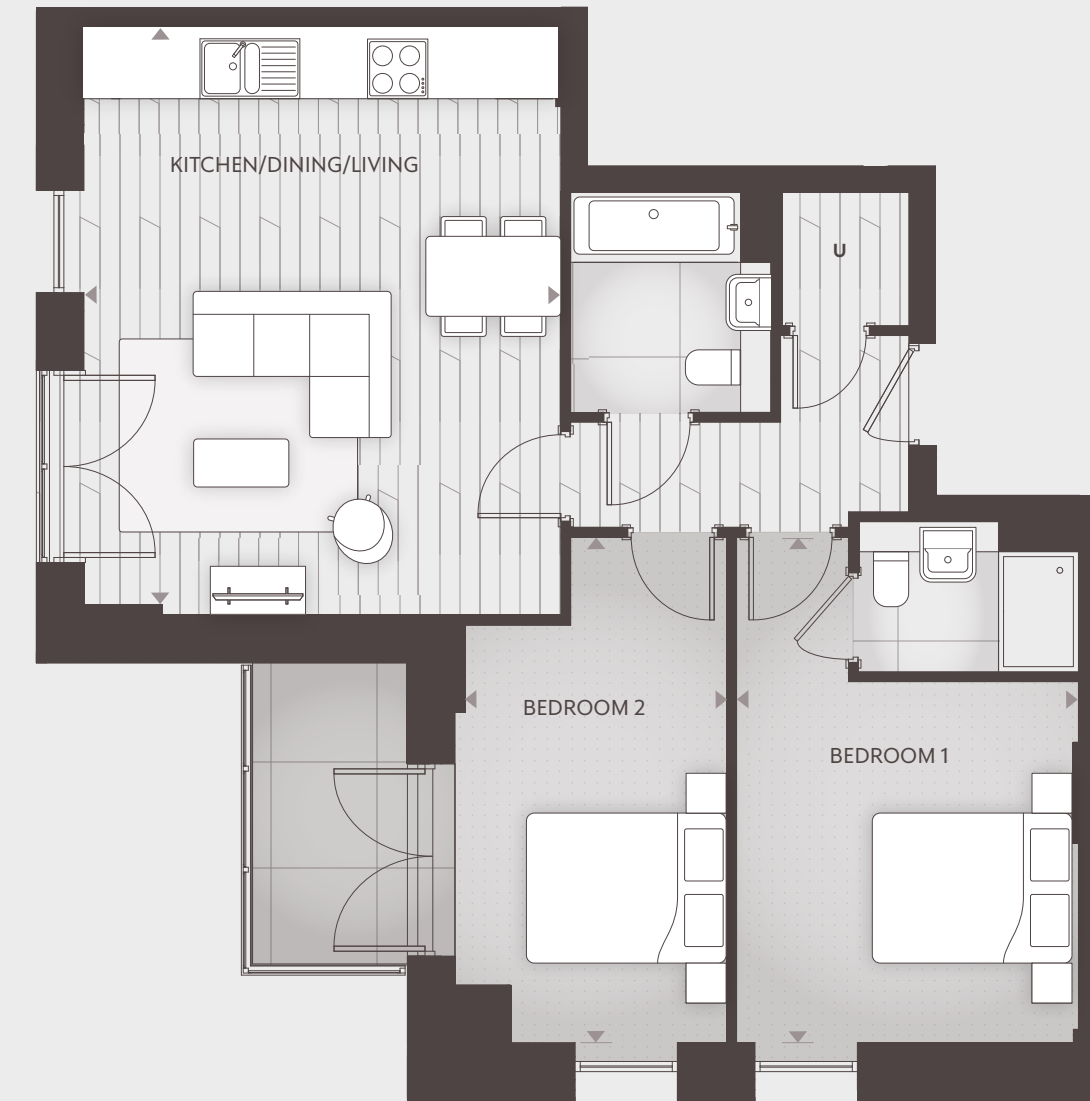
Internal Finish Specification **S** = Silver Kitchen Specification **G** = Gold

U = Utility Cupboard

Note: - these dimensions are accurate to within +/- 50mm. They are not intended to be used for carpet sizes, appliance spaces or items of furniture. All dimensions taken to the widest point. Kitchen layouts are indicative.

TWO BEDROOM APARTMENT - TYPE FT-29

BUILDING B



Total Internal Area

70m² (753 ft²)

Kitchen/Dining/Living

5818mm x 4770.5mm

Bedroom 1

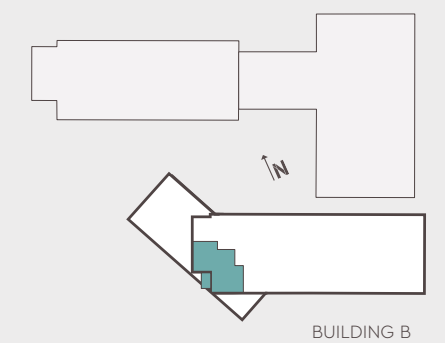
5055.5mm x 3420mm

Bedroom 2

5055.5mm x 2718mm

Floor Apt. No. Spec

4th **B.04.07** **S** **G**



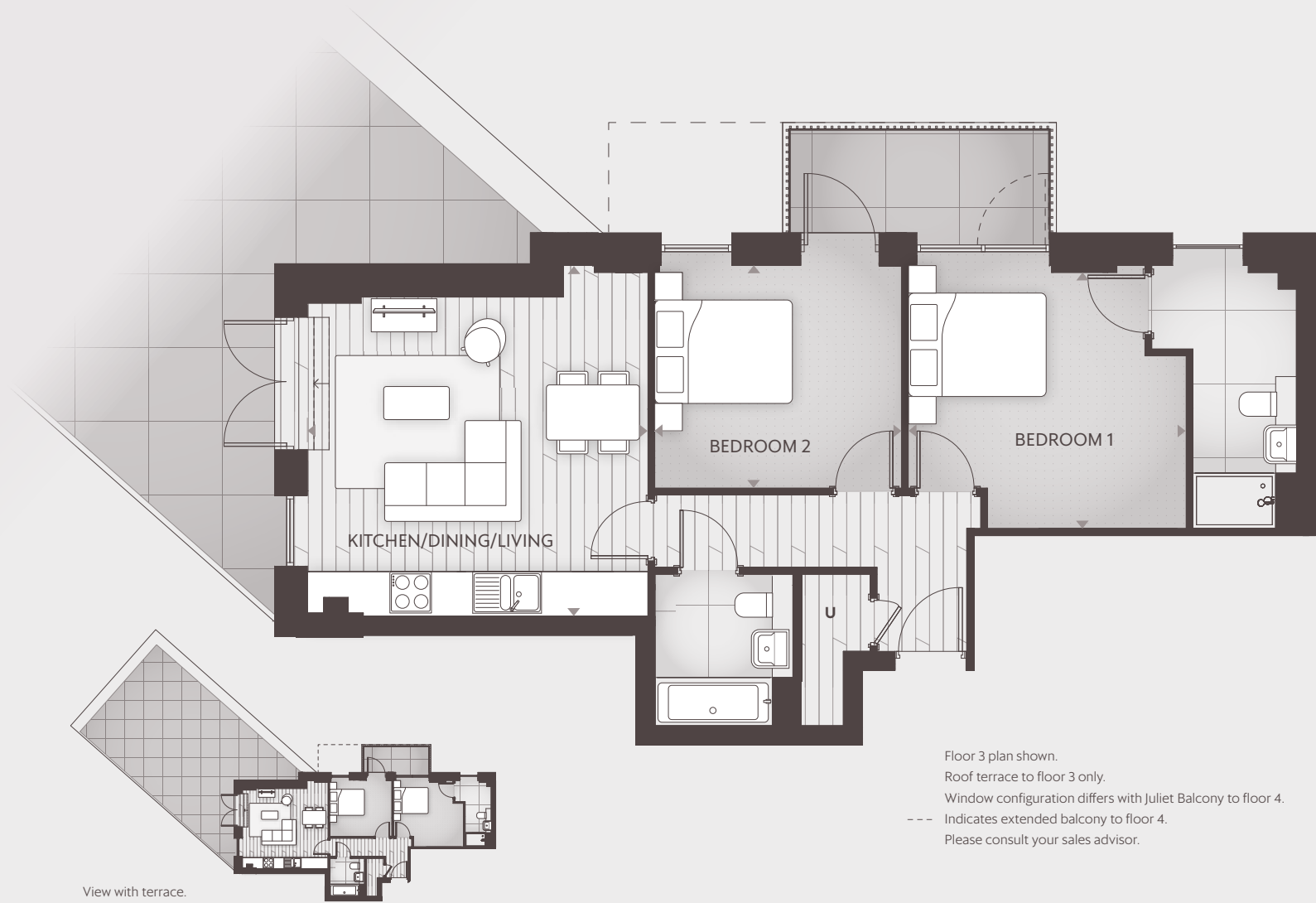
Internal Finish Specification **S** = Silver Kitchen Specification **G** = Gold

U = Utility Cupboard

Note: - these dimensions are accurate to within +/- 50mm. They are not intended to be used for carpet sizes, appliance spaces or items of furniture. All dimensions taken to the widest point. Kitchen layouts are indicative.

TWO BEDROOM APARTMENT - TYPE FT-30

BUILDING B



Floor 3 plan shown.
 Roof terrace to floor 3 only.
 Window configuration differs with Juliet Balcony to floor 4.
 --- Indicates extended balcony to floor 4.
 Please consult your sales advisor.

View with terrace.

Total Internal Area

70m² (753 ft²)

Kitchen/Dining/Living

5093mm x 4946mm

Bedroom 1

4035mm x 3710mm

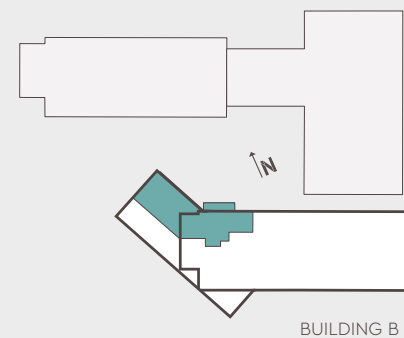
Bedroom 2

3580mm x 3230.5mm

Floor Apt. No. Spec

4th **B.04.08** **S** **G**

3rd **B.03.08** **S** **G**



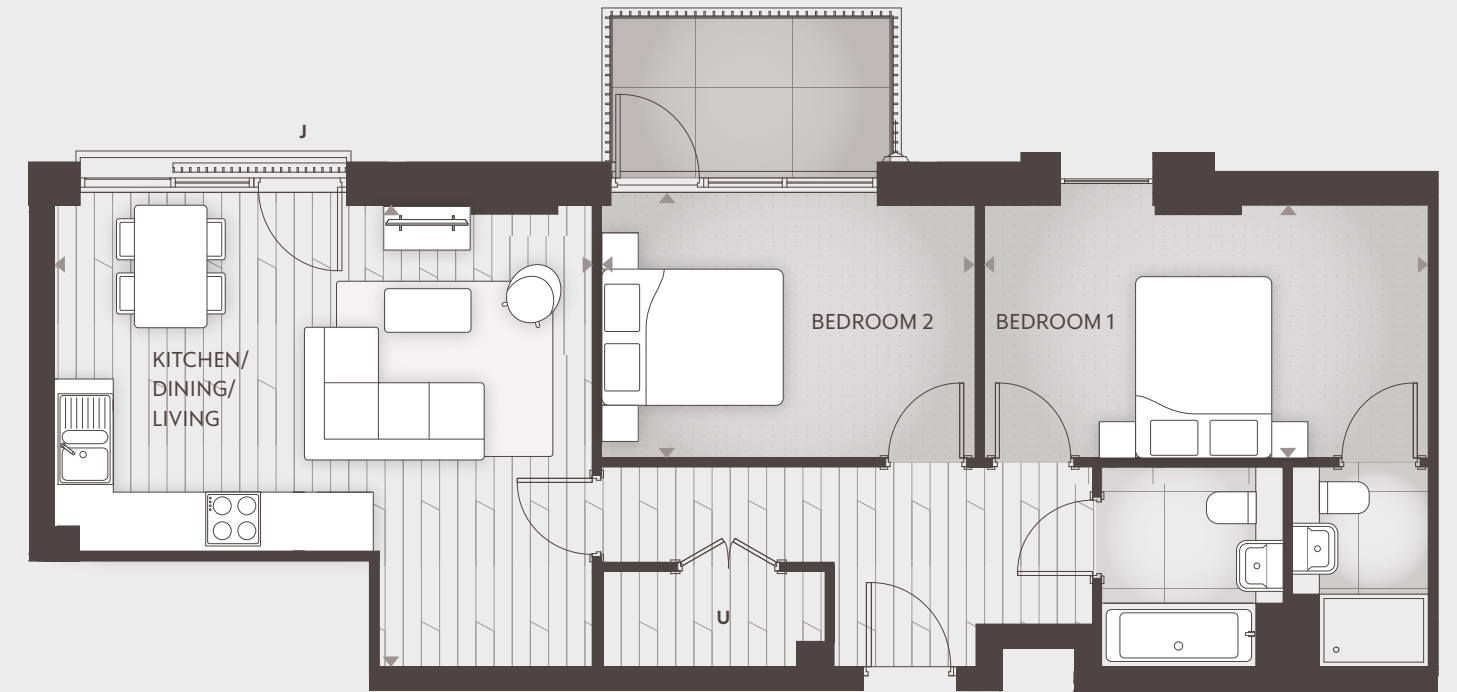
Internal Finish Specification **S** = Silver Kitchen Specification **G** = Gold

U = Utility Cupboard

Note: - these dimensions are accurate to within +/- 50mm. They are not intended to be used for carpet sizes, appliance spaces or items of furniture. All dimensions taken to the widest point. Kitchen layouts are indicative.

TWO BEDROOM APARTMENT - TYPE FT-31

BUILDING B



Total Internal Area

72m² (775 ft²)

Kitchen/Dining/Living

5930mm x 5084.5mm

Bedroom 1

4895mm x 2785.5mm

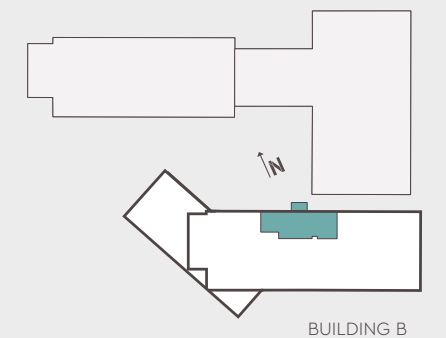
Bedroom 2

4120mm x 2784.5mm

Floor Apt. No. Spec

4th **B.04.09** **S** **G**

3rd **B.03.09** **S** **G**



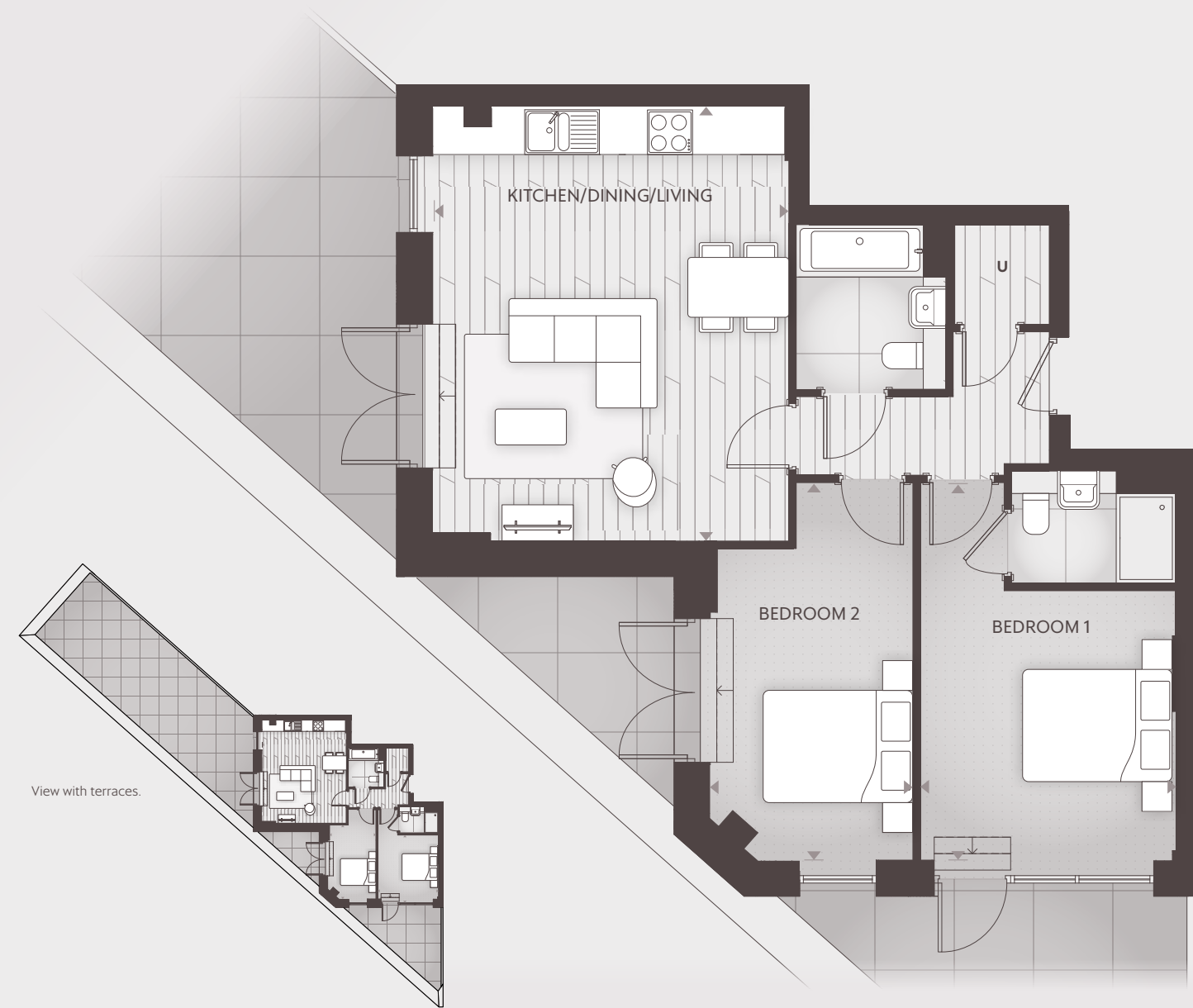
Internal Finish Specification **S** = Silver Kitchen Specification **G** = Gold

J = Juliet Balcony **U** = Utility Cupboard

Note: - these dimensions are accurate to within +/- 50mm. They are not intended to be used for carpet sizes, appliance spaces or items of furniture. All dimensions taken to the widest point. Kitchen layouts are indicative.

TWO BEDROOM APARTMENT - TYPE FT-73

BUILDING B



Total Internal Area

70m² (753 ft²)

Kitchen/Dining/Living

5818mm x 4770.5mm

Bedroom 1

5055.5mm x 3420mm

Bedroom 2

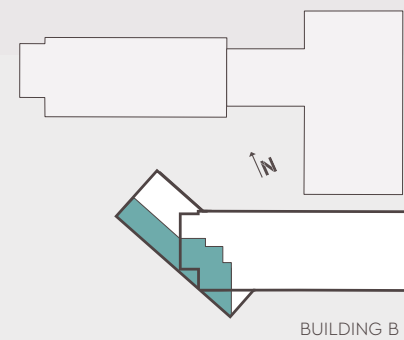
5055.5mm x 2718mm

Floor Apt. No. Spec

3rd **B.03.07** **S** **G**

Internal Finish Specification **S** = Silver Kitchen Specification **G** = Gold

U = Utility Cupboard



Note: - these dimensions are accurate to within +/- 50mm. They are not intended to be used for carpet sizes, appliance spaces or items of furniture. All dimensions taken to the widest point. Kitchen layouts are indicative.

THREE BEDROOM

BUILDING B

McARTHUR'S YARD

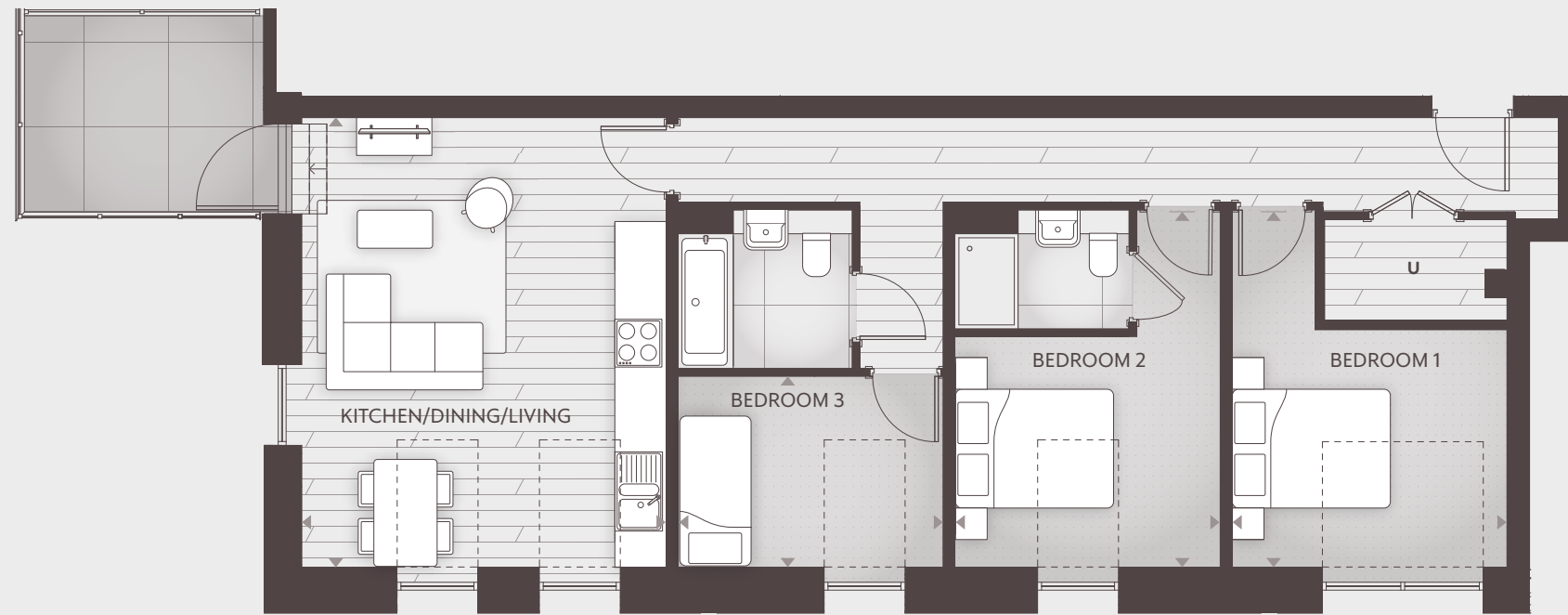
McARTHUR'S YARD

Computer generated image for illustrative purposes only.



THREE BEDROOM APARTMENT - TYPE FT-51

BUILDING B



Total Internal Area

87m² (936 ft²)

Kitchen/Dining/Living

5681mm x 4607.5mm

Bedroom 1

4513mm x 3475.5mm

Bedroom 2

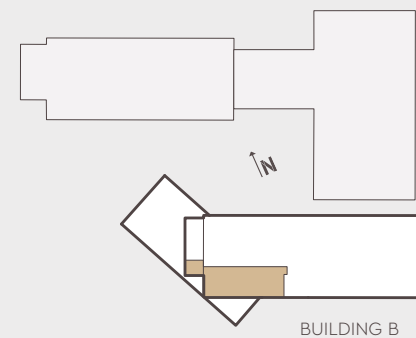
4513mm x 3355mm

Bedroom 3

3350mm x 2413mm

Floor Apt. No. Spec

5th **B.05.06** **S*** **G**



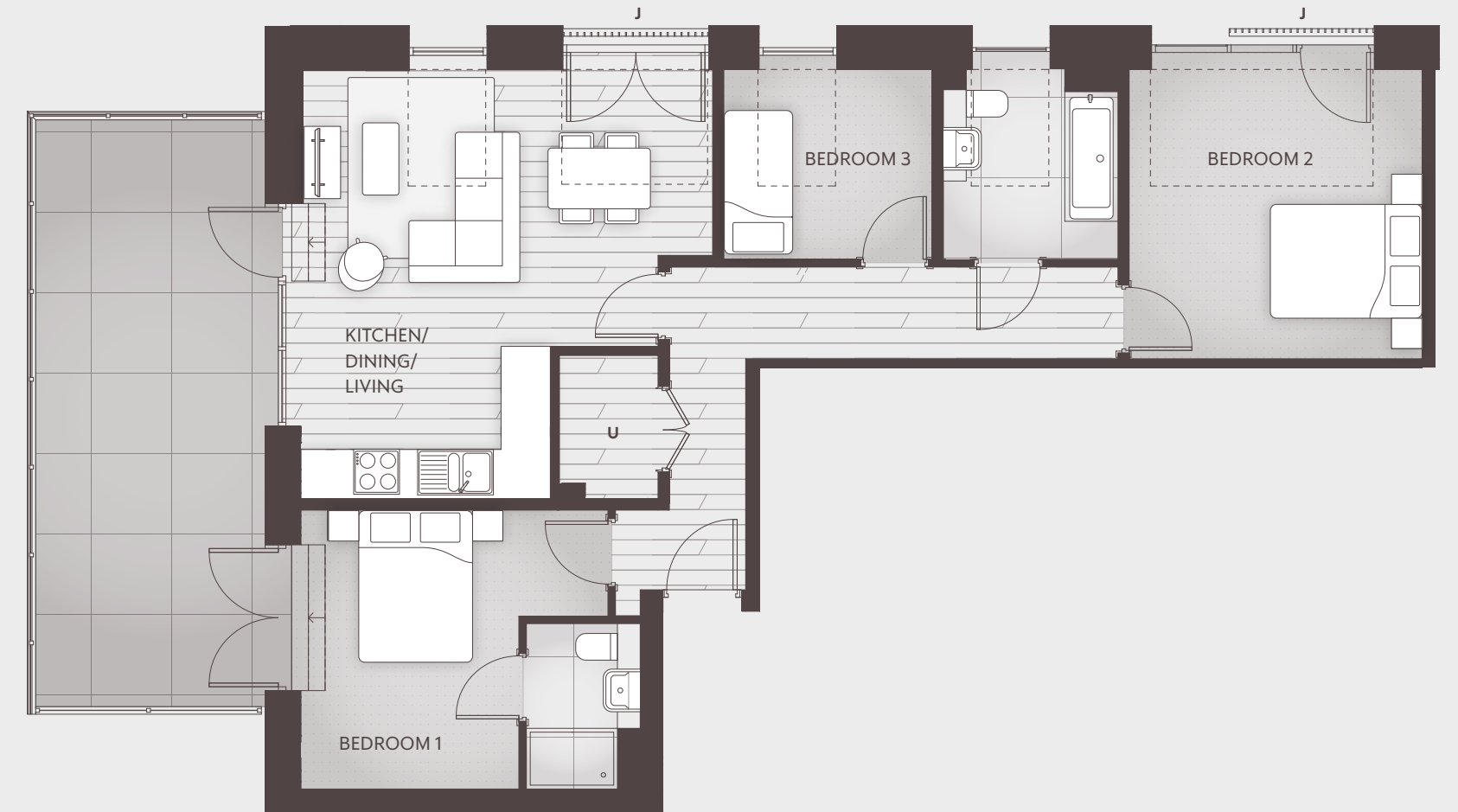
Internal Finish Specification **S*** = Silver Plus Kitchen Specification **G** = Gold

--- Rooflight **U** = Utility Cupboard

Note: - these dimensions are accurate to within +/- 50mm. They are not intended to be used for carpet sizes, appliance spaces or items of furniture. All dimensions taken to the widest point. Kitchen layouts are indicative.

THREE BEDROOM APARTMENT - TYPE FT-52

BUILDING B



Total Internal Area

86m² (926 ft²)

Kitchen/Dining/Living

5658mm x 5425.5mm

Bedroom 1

4046.5mm x 3677mm

Bedroom 2

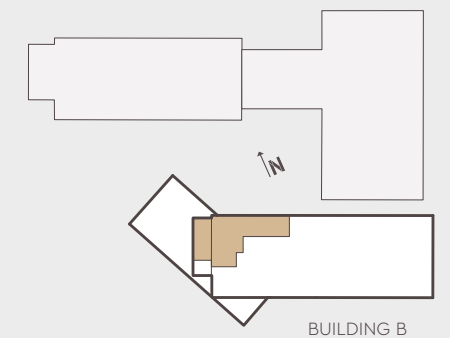
3863mm x 3813mm

Bedroom 3

2744.5mm x 2500mm

Floor Apt. No. Spec

5th **B.05.07** **S*** **G**



Internal Finish Specification **S*** = Silver Plus Kitchen Specification **G** = Gold

J = Juliet Balcony --- Rooflight **U** = Utility Cupboard

Note: - these dimensions are accurate to within +/- 50mm. They are not intended to be used for carpet sizes, appliance spaces or items of furniture. All dimensions taken to the widest point. Kitchen layouts are indicative.

DUPLEX APARTMENTS

BUILDING B

McARTHUR'S YARD

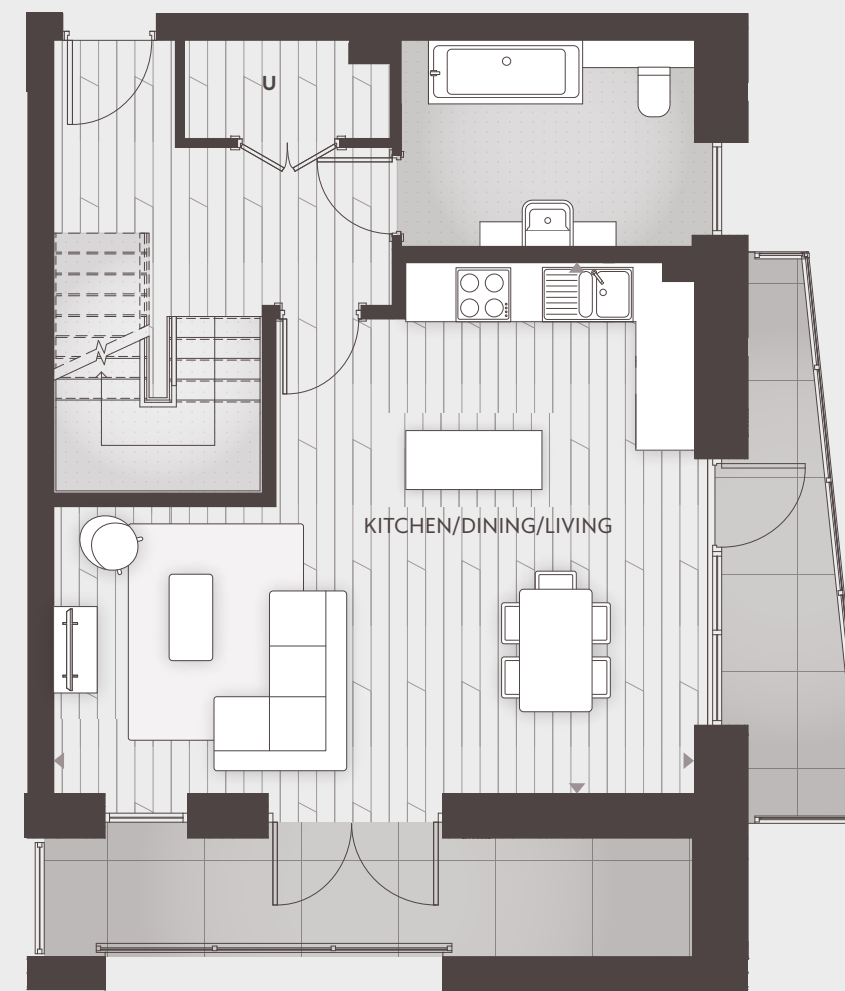


Computer generated image for illustrative purposes only.

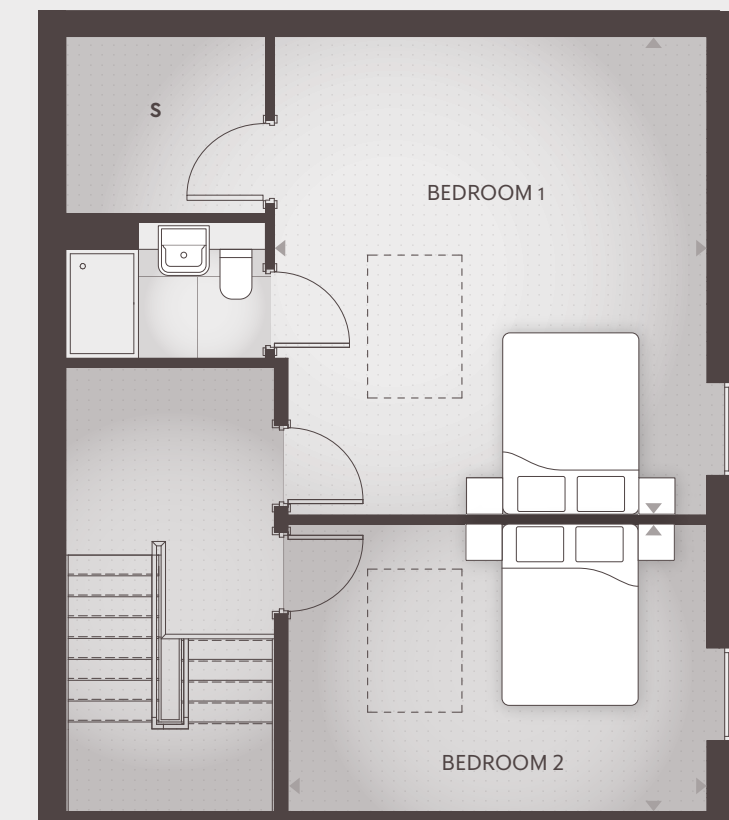
TWO BEDROOM DUPLEX APARTMENT - TYPE DT-06

BUILDING B

Lower floor



Upper floor



Total Internal Area

119.3m² (1284 ft²)

Kitchen/Dining/Living

7065.5mm x 5850.5mm

Bedroom 1

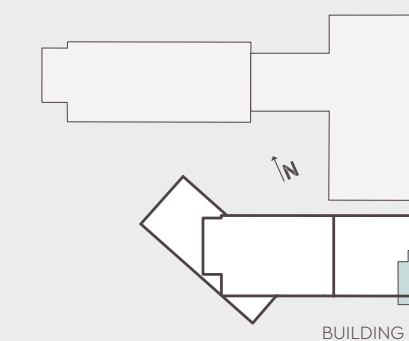
4765.5mm x 3227.5mm

Bedroom 2

4615.5mm x 3206.5mm

Floor Apt. No. Spec

6th & 7th B.06.02 S+ G



Internal Finish Specification **S+** = Silver Plus Kitchen Specification **G** = Gold

--- Rooflight **U** = Utility Cupboard **S** = Storage

Note: - these dimensions are accurate to within +/- 50mm. They are not intended to be used for carpet sizes, appliance spaces or items of furniture. All dimensions taken to the widest point. Kitchen layouts are indicative. Layout subject to planning change.

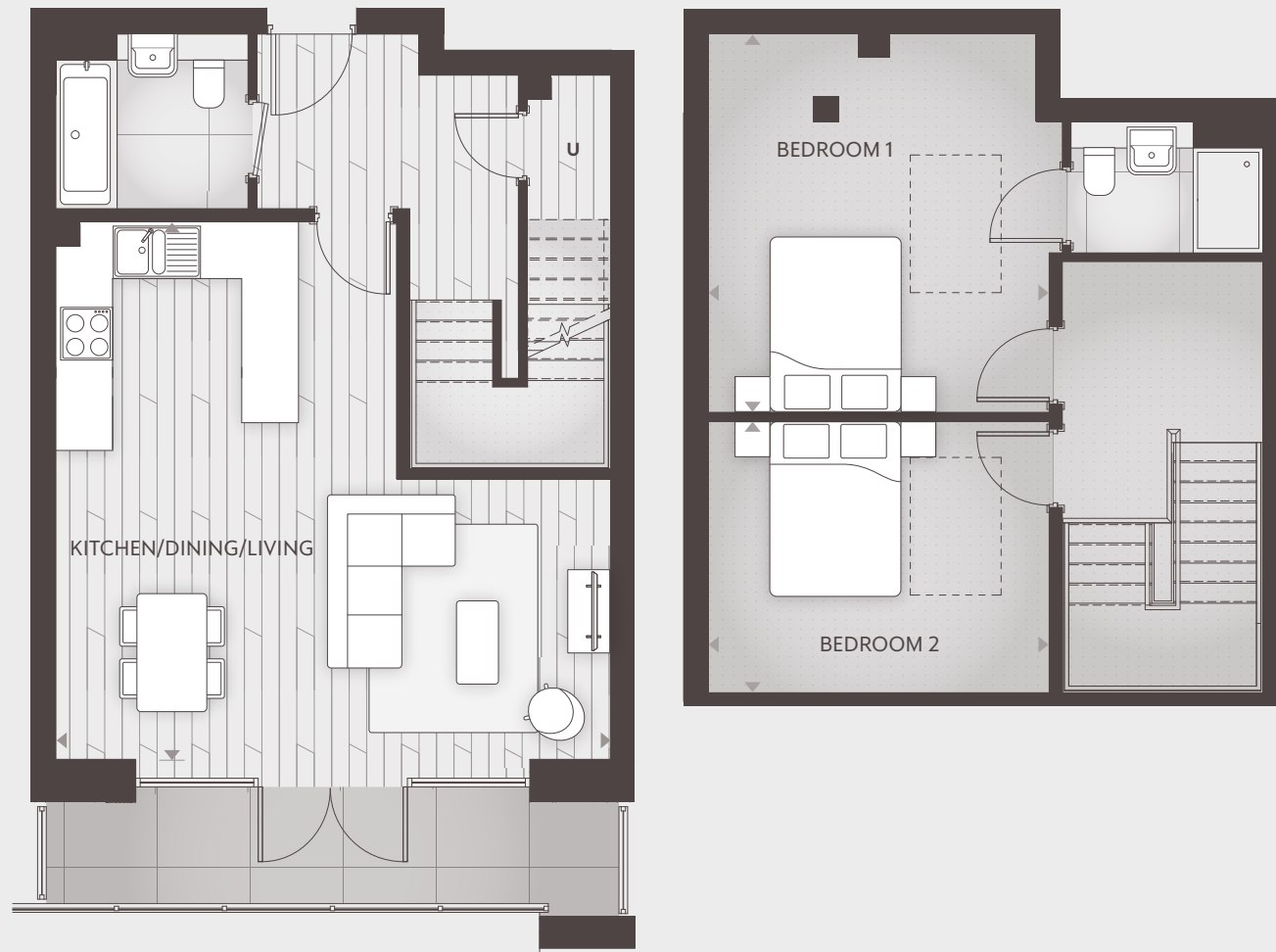
McARTHUR'S YARD

TWO BEDROOM DUPLEX APARTMENT - TYPE DT-07

BUILDING B

Lower floor

Upper floor



Total Internal Area

97.1m² (1045 ft²)

Kitchen/Dining/Living

6350mm x 6150.5mm

Bedroom 1

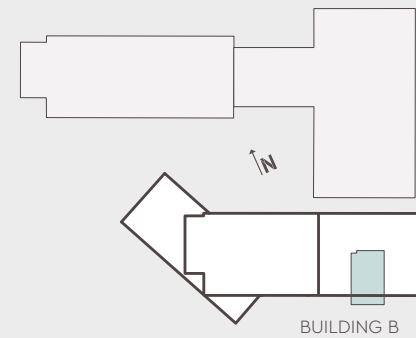
3900mm x 3325.5mm

Bedroom 2

3900mm x 3109mm

Floor Apt. No. Spec

6th & 7th B.06.03 S+ G



Internal Finish Specification S+ = Silver Plus Kitchen Specification G = Gold

--- Rooflight U = Utility Cupboard

THREE BEDROOM DUPLEX APARTMENT - TYPE DT-08

BUILDING B

Lower floor



Total Internal Area

119m² (1281 ft²)

Kitchen/Dining/Living

7030mm x 6288mm

Bedroom 1

4586mm x 3685.5mm

Bedroom 2

3985.5mm x 3175.5mm

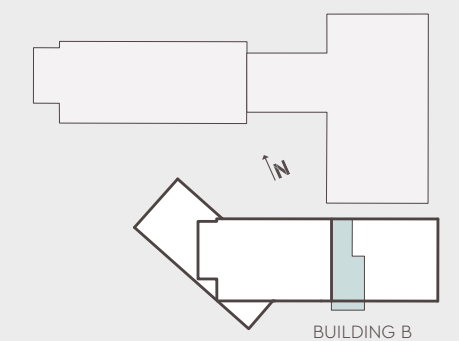
Bedroom 3

3838mm x 3260mm

Floor Apt. No. Spec

6th & 7th B.06.04 S+ G

Upper floor



Internal Finish Specification S+ = Silver Plus Kitchen Specification G = Gold

--- Rooflight U = Utility Cupboard

ONE BEDROOM

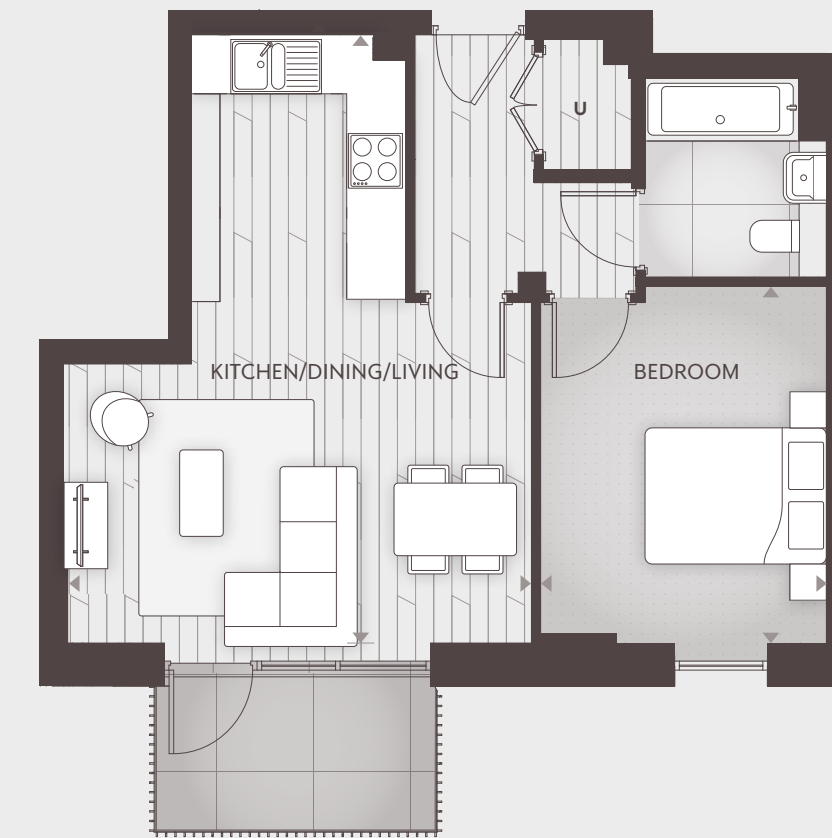
BUILDING C

MCCARTHUR'S YARD

Stock image.

ONE BEDROOM APARTMENT - TYPE FT-22

BUILDING C



Total Internal Area

50m² (538 ft²)

Kitchen/Dining/Living

6703mm x 5161.5mm

Bedroom

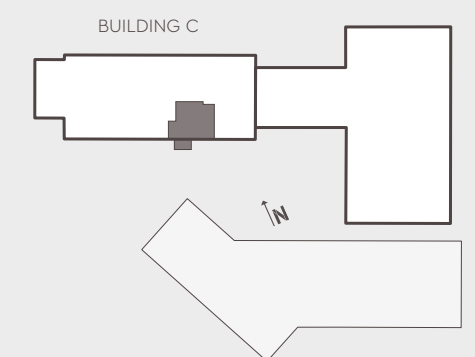
3933.5mm x 3150.5mm

Floor Apt. No. Spec

3rd	C.03.05	S	G
2nd	C.02.04	S	G
1st	C.01.05	S	G

Internal Finish Specification **S** = Silver Kitchen Specification **G** = Gold

U = Utility Cupboard

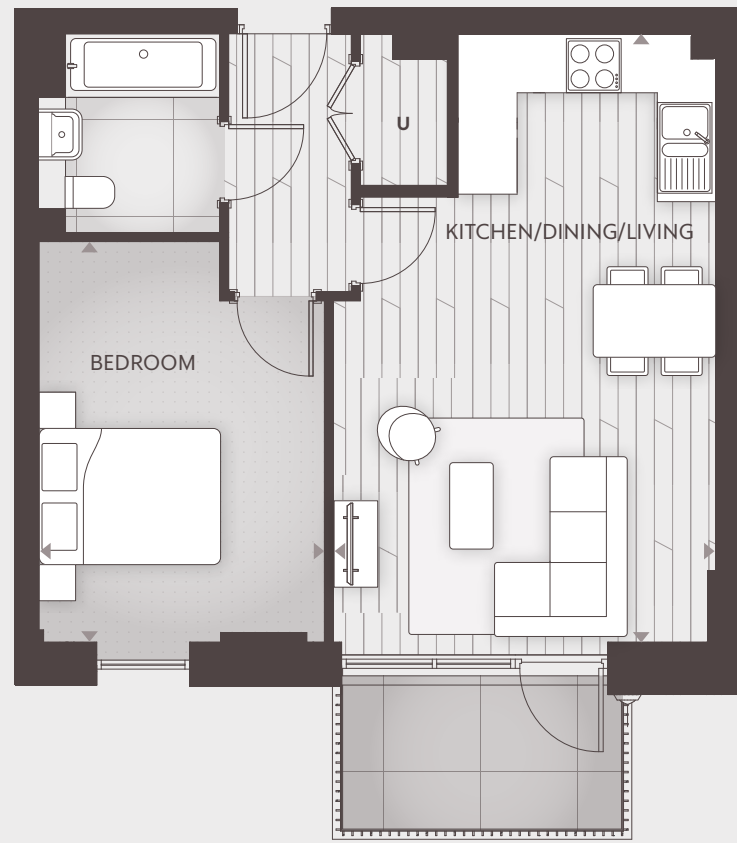


MCCARTHUR'S YARD

Note: - these dimensions are accurate to within +/- 50mm. They are not intended to be used for carpet sizes, appliance spaces or items of furniture. All dimensions taken to the widest point. Kitchen layouts are indicative.

ONE BEDROOM APARTMENT - TYPE FT-32

BUILDING C



Total Internal Area

50m² (538 ft²)

Kitchen/Dining/Living

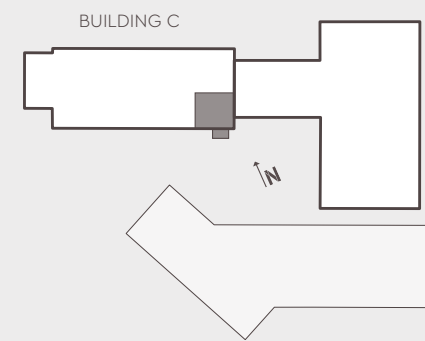
6703mm x 4229mm

Bedroom

4412.5mm x 3144mm

Floor Apt. No. Spec

3rd C.03.04 S G



Internal Finish Specification **S** = Silver Kitchen Specification **G** = Gold

U = Utility Cupboard

Note: - these dimensions are accurate to within +/- 50mm. They are not intended to be used for carpet sizes, appliance spaces or items of furniture. All dimensions taken to the widest point. Kitchen layouts are indicative.

ONE BEDROOM APARTMENT - TYPE FT-33

BUILDING C



Total Internal Area

50m² (538 ft²)

Kitchen/Dining/Living

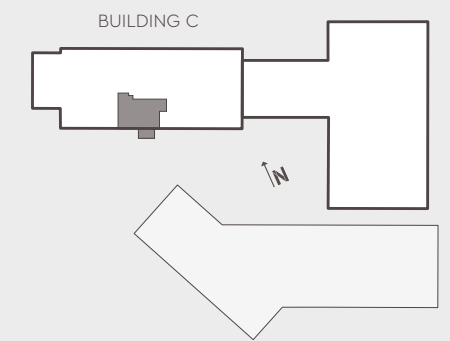
5556mm x 4595.5mm

Bedroom

4470mm x 2750mm

Floor Apt. No. Spec

3rd C.03.06 S G



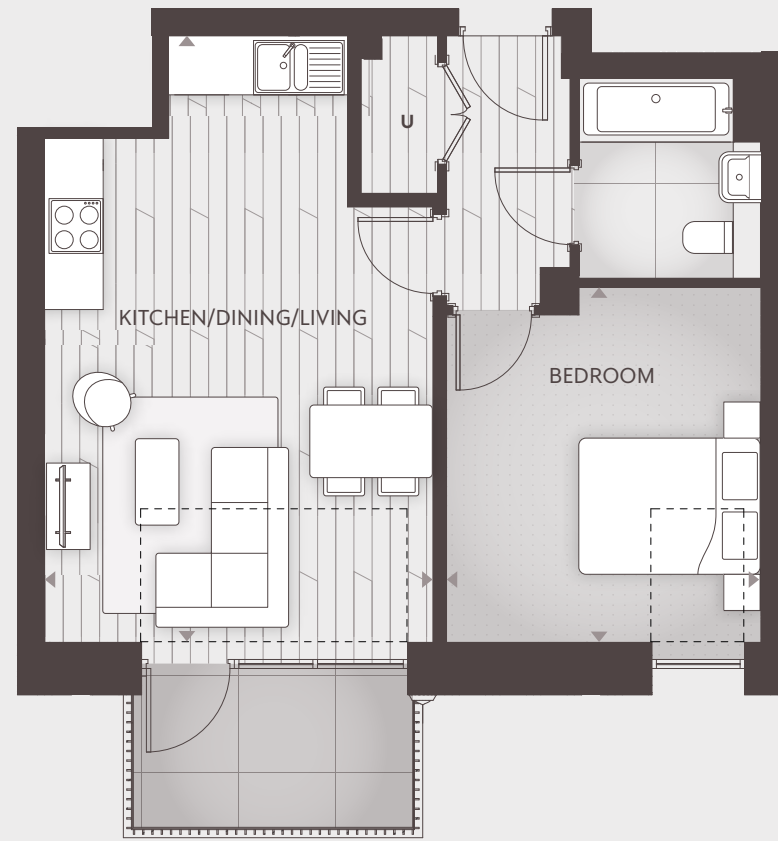
Internal Finish Specification **S** = Silver Kitchen Specification **G** = Gold

U = Utility Cupboard

Note: - these dimensions are accurate to within +/- 50mm. They are not intended to be used for carpet sizes, appliance spaces or items of furniture. All dimensions taken to the widest point. Kitchen layouts are indicative.

ONE BEDROOM APARTMENT - TYPE FT-40

BUILDING C



Total Internal Area

50m² (538 ft²)

Kitchen/Dining/Living

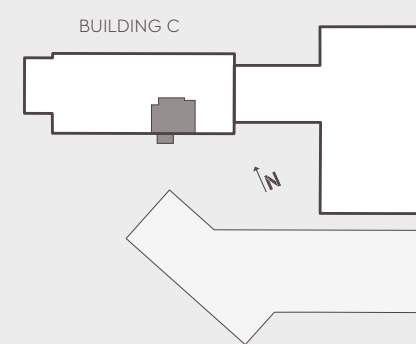
6683mm x 4280mm

Bedroom

3913mm x 3465mm

Floor Apt. No. Spec

4th C.04.04 S+ G



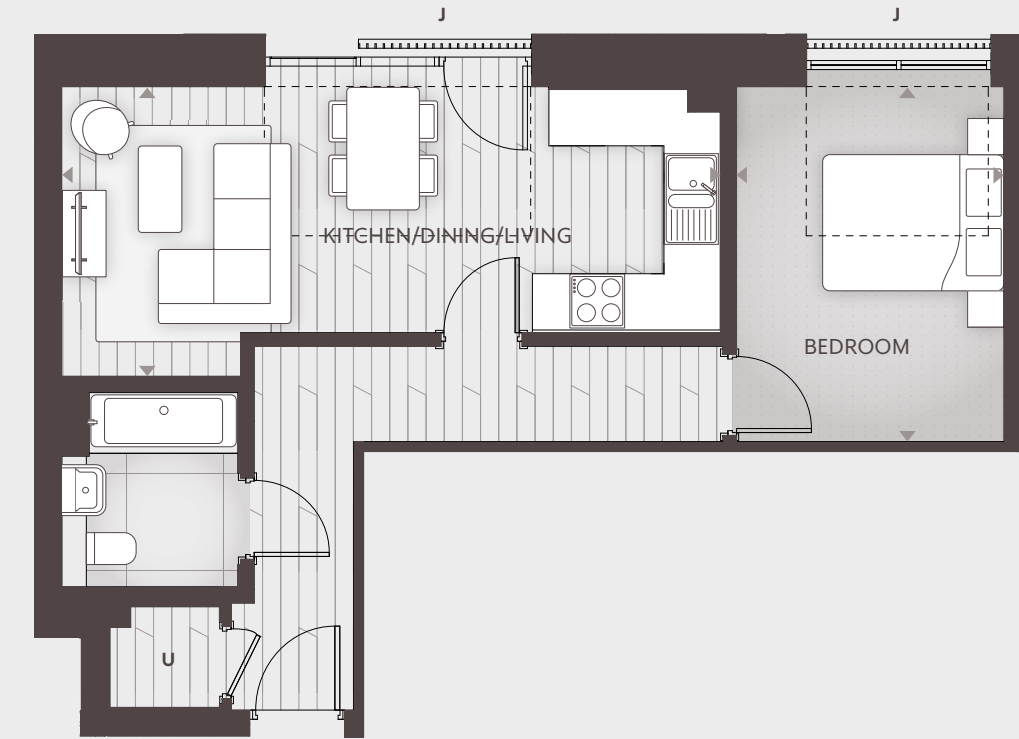
Internal Finish Specification S+ = Silver Plus Kitchen Specification G = Gold

--- Rooflight U = Utility Cupboard

Note: - these dimensions are accurate to within +/- 50mm. They are not intended to be used for carpet sizes, appliance spaces or items of furniture. All dimensions taken to the widest point. Kitchen layouts are indicative.

ONE BEDROOM APARTMENT - TYPE FT-43

BUILDING C



Total Internal Area

50m² (538 ft²)

Kitchen/Dining/Living

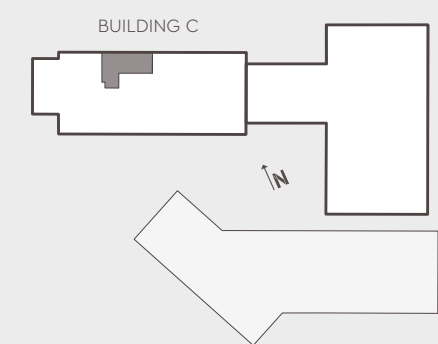
7315mm x 3190.5mm

Bedroom

3910.5mm x 2950mm

Floor Apt. No. Spec

4th C.04.08 S+ G



Internal Finish Specification S+ = Silver Plus Kitchen Specification G = Gold

J = Juliet Balcony --- Rooflight U = Utility Cupboard

Note: - these dimensions are accurate to within +/- 50mm. They are not intended to be used for carpet sizes, appliance spaces or items of furniture. All dimensions taken to the widest point. Kitchen layouts are indicative.

TWO BEDROOM

BUILDING C

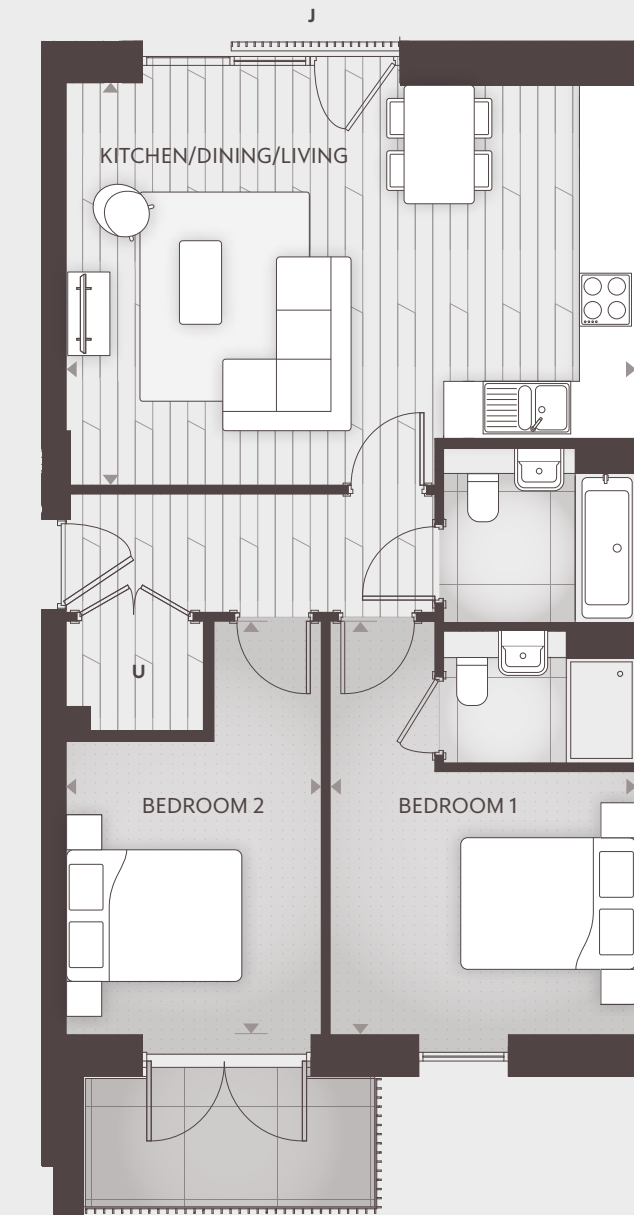
McARTHUR'S YARD



Computer-generated image for illustrative purposes only.

TWO BEDROOM APARTMENT - TYPE FT-21

BUILDING C



Total Internal Area

71m² (764 ft²)

Kitchen/Dining/Living

6504.5mm x 4588mm

Bedroom 1

4715.5mm x 3495mm

Bedroom 2

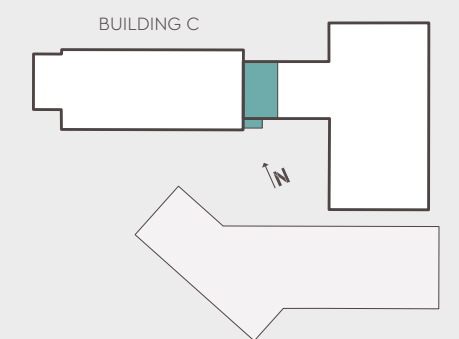
3345.5mm x 2909.5mm

Floor Apt. No. Spec

3rd	C.03.03	S	G
2nd	C.02.03	S	G
1st	C.01.03	S	G

Internal Finish Specification **S** = Silver Kitchen Specification **G** = Gold

J = Juliet Balcony U = Utility Cupboard

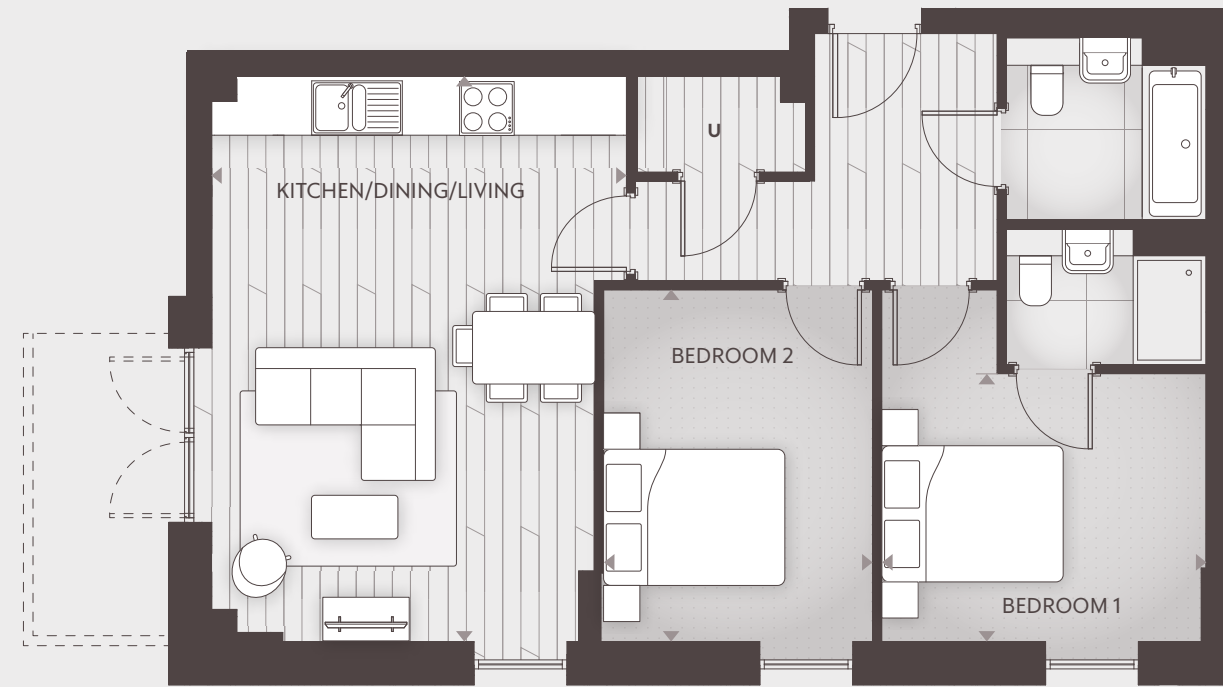


McARTHUR'S YARD

Note: - these dimensions are accurate to within +/- 50mm. They are not intended to be used for carpet sizes, appliance spaces or items of furniture. All dimensions taken to the widest point. Kitchen layouts are indicative.

TWO BEDROOM APARTMENT - TYPE FT-23

BUILDING C



Floor 1 plan shown.
 --- Indicates balcony and french doors to floors 2 and 3 only.
 Please note window configuration to floors 2 and 3 vary.
 Please consult your sales advisor.

Total Internal Area

70m² (753 ft²)

Kitchen/Dining/Living

6233mm x 4570mm

Bedroom 1

3570mm x 2953mm

Bedroom 2

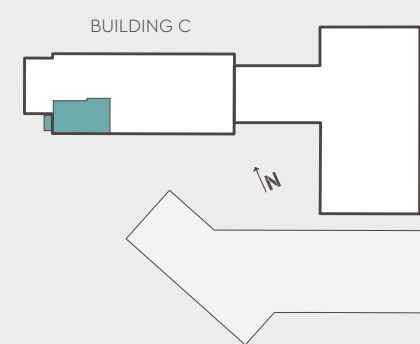
3877.5mm x 2965mm

Floor Apt. No. Spec

3rd C.03.07 S G

2nd C.02.05 S G

1st C.01.07 S G



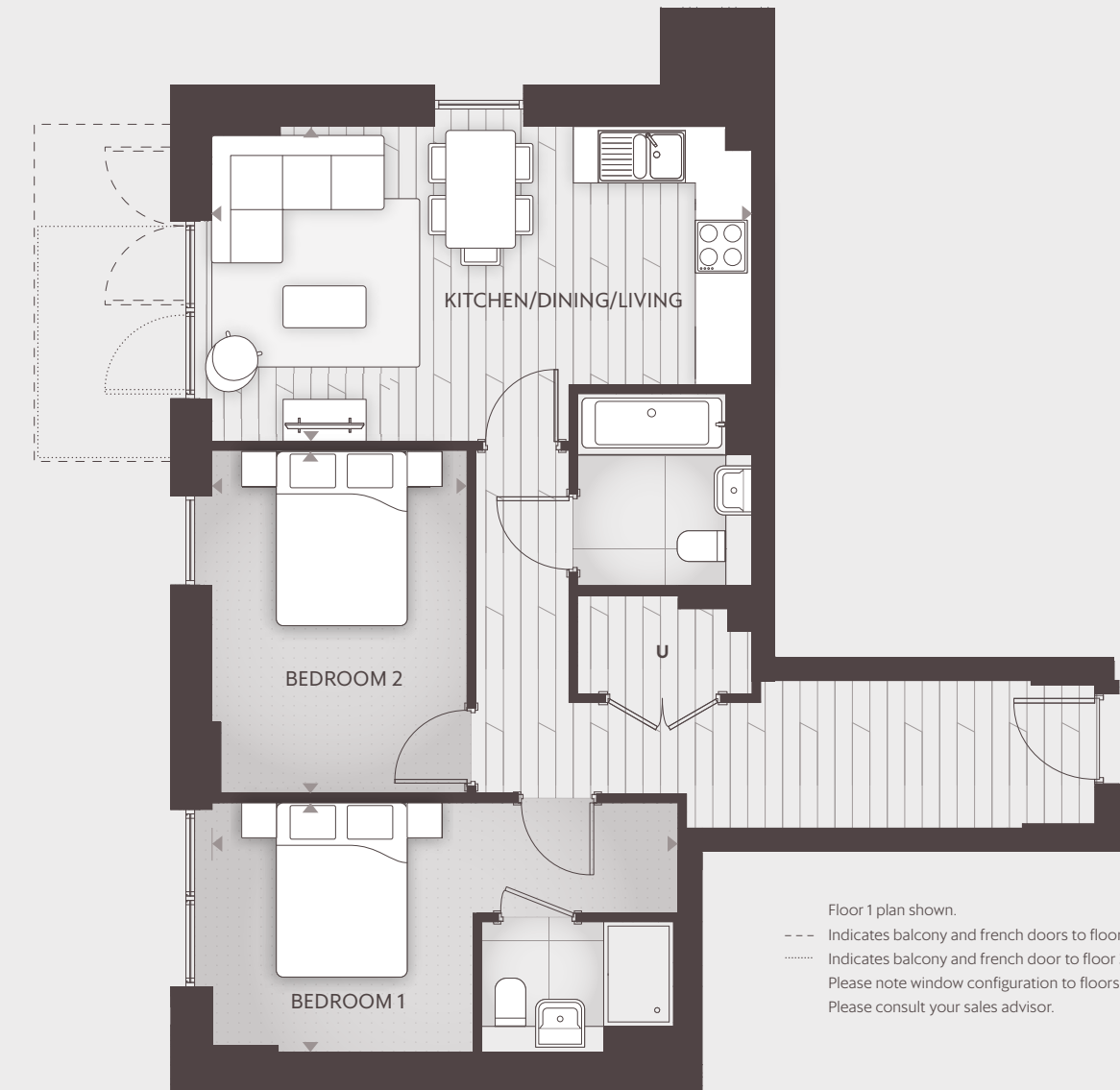
Internal Finish Specification **S** = Silver Kitchen Specification **G** = Gold

U = Utility Cupboard

Note: - these dimensions are accurate to within +/- 50mm. They are not intended to be used for carpet sizes, appliance spaces or items of furniture. All dimensions taken to the widest point. Kitchen layouts are indicative.

TWO BEDROOM APARTMENT - TYPE FT-24

BUILDING C



Floor 1 plan shown.
 --- Indicates balcony and french doors to floor 2.
 Indicates balcony and french door to floor 3.
 Please note window configuration to floors 2 and 3 vary.
 Please consult your sales advisor.

Total Internal Area

70m² (753 ft²)

Kitchen/Dining/Living

6195.5mm x 3618mm

Bedroom 1

5345mm x 2865.5mm

Bedroom 2

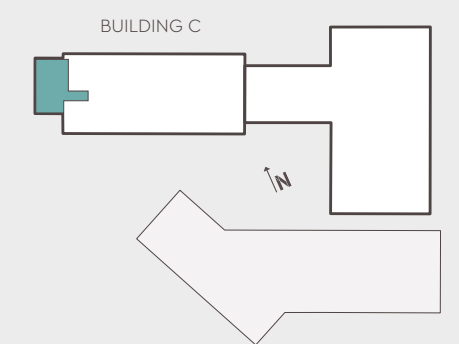
3945mm x 2925mm

Floor Apt. No. Spec

3rd C.03.08 S G

2nd C.02.06 S G

1st C.01.08 S G



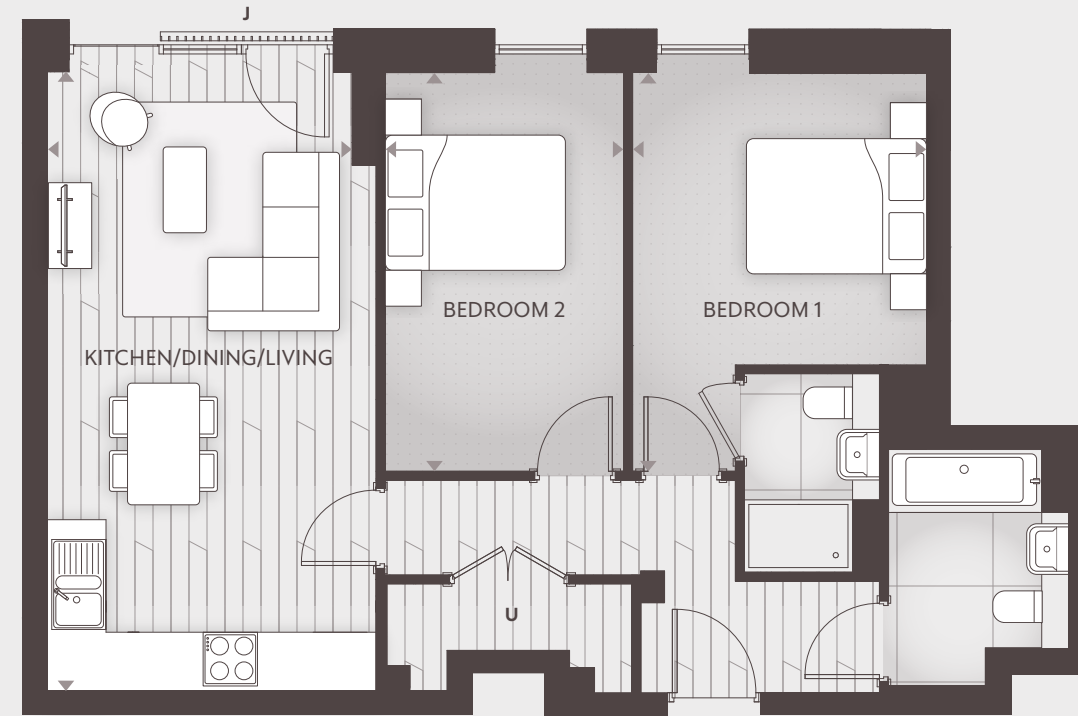
Internal Finish Specification **S** = Silver Kitchen Specification **G** = Gold

U = Utility Cupboard

Note: - these dimensions are accurate to within +/- 50mm. They are not intended to be used for carpet sizes, appliance spaces or items of furniture. All dimensions taken to the widest point. Kitchen layouts are indicative.

TWO BEDROOM APARTMENT - TYPE FT-25

BUILDING C



Total Internal Area

70m² (753 ft²)

Kitchen/Dining/Living

6868mm x 3645mm

Bedroom 1

4433mm x 3262mm

Bedroom 2

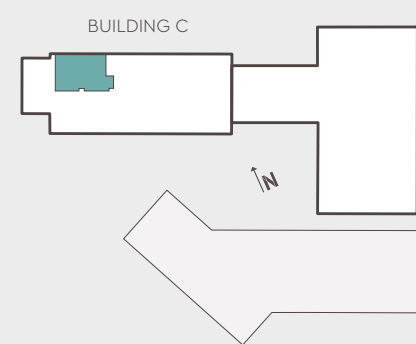
4433mm x 2650mm

Floor Apt. No. Spec

3rd C.03.09 S G

2nd C.02.07 S G

1st C.01.09 S G



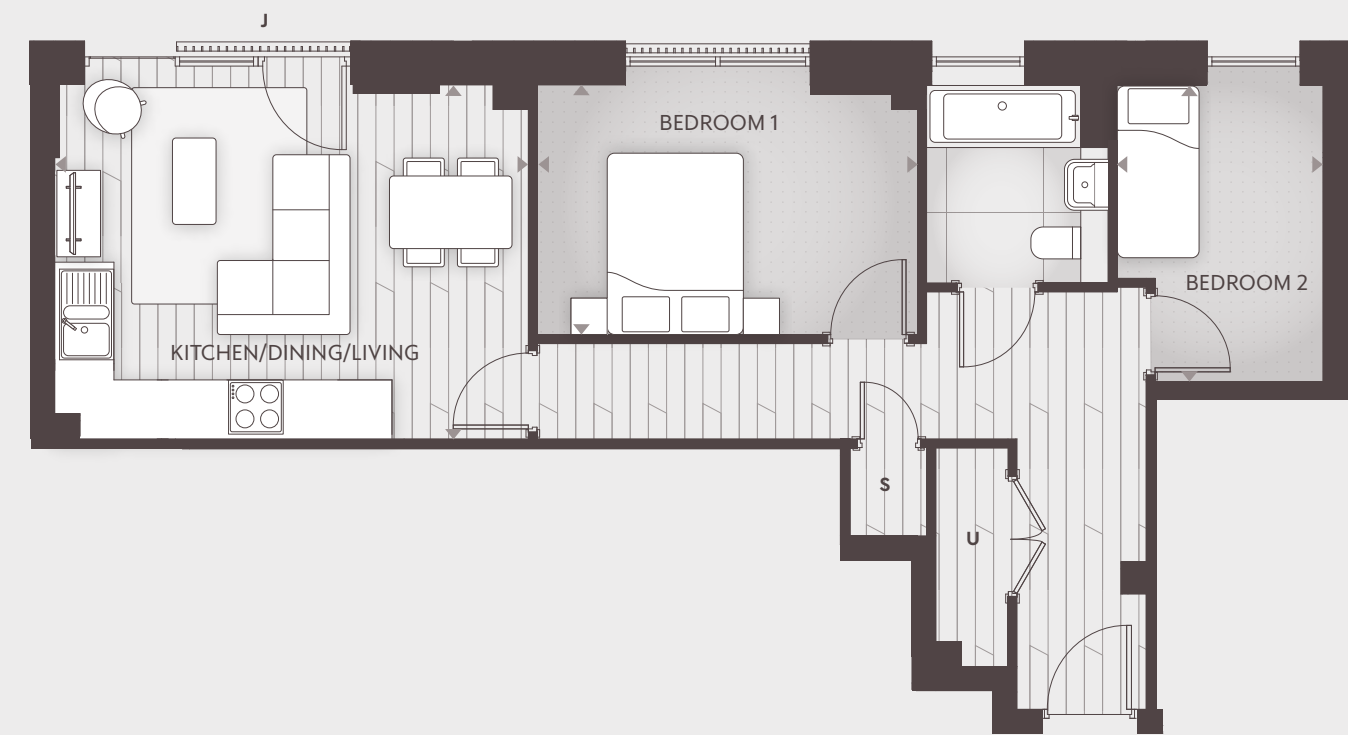
Internal Finish Specification **S** = Silver Kitchen Specification **G** = Gold

J = Juliet Balcony U = Utility Cupboard

Note: - these dimensions are accurate to within +/- 50mm. They are not intended to be used for carpet sizes, appliance spaces or items of furniture. All dimensions taken to the widest point. Kitchen layouts are indicative.

TWO BEDROOM APARTMENT - TYPE FT-26

BUILDING C



Total Internal Area

61m² (657 ft²)

Kitchen/Dining/Living

5218mm x 3910.5mm

Bedroom 1

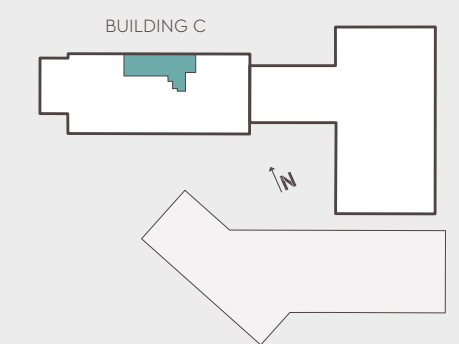
4190mm x 2760.5mm

Bedroom 2

3280.5mm x 2270mm

Floor Apt. No. Spec

1st C.01.01 S G



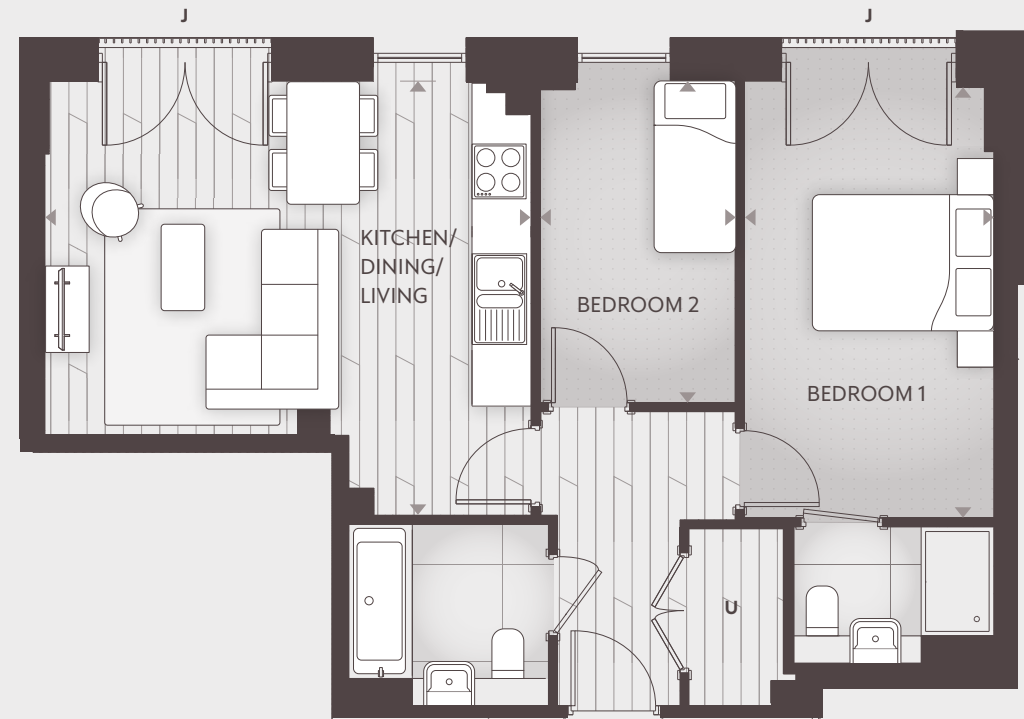
Internal Finish Specification **S** = Silver Kitchen Specification **G** = Gold

J = Juliet Balcony U = Utility Cupboard S = Storage

Note: - these dimensions are accurate to within +/- 50mm. They are not intended to be used for carpet sizes, appliance spaces or items of furniture. All dimensions taken to the widest point. Kitchen layouts are indicative.

TWO BEDROOM APARTMENT - TYPE FT-27

BUILDING C



Total Internal Area

61m² (657 ft²)

Kitchen/Dining/Living

5358mm x 4790.5mm

Bedroom 1

4812.5mm x 2750mm

Bedroom 2

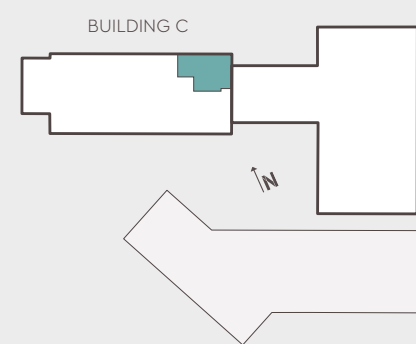
3550.5mm x 2150mm

Floor Apt. No. Spec

3rd **C.03.02** **S** **G**

2nd **C.02.02** **S** **G**

1st **C.01.02** **S** **G**



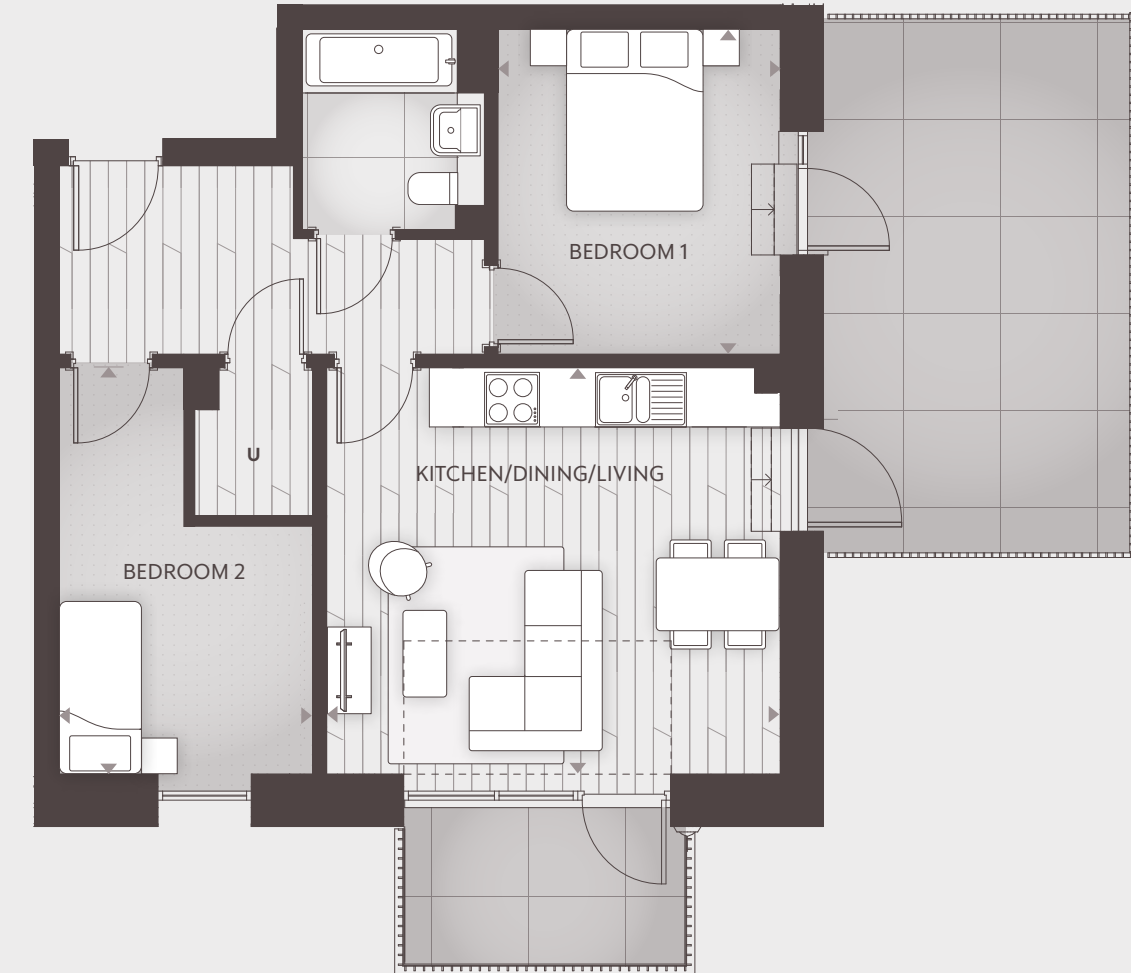
Internal Finish Specification **S** = Silver Kitchen Specification **G** = Gold

J = Juliet Balcony U = Utility Cupboard

Note: - these dimensions are accurate to within +/- 50mm. They are not intended to be used for carpet sizes, appliance spaces or items of furniture. All dimensions taken to the widest point. Kitchen layouts are indicative.

TWO BEDROOM APARTMENT - TYPE FT-39

BUILDING C



Total Internal Area

61m² (657 ft²)

Kitchen/Dining/Living

4985mm x 4462.5mm

Bedroom 1

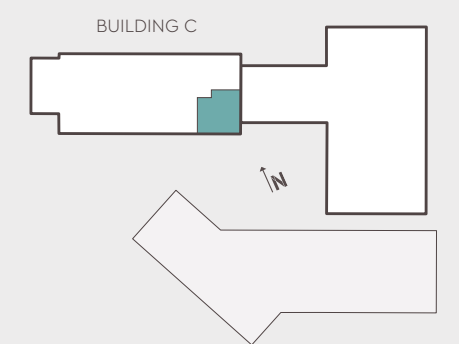
3570.5mm x 3100.5mm

Bedroom 2

4462.5mm x 2790mm

Floor Apt. No. Spec

4th **C.04.03** **S** **G**



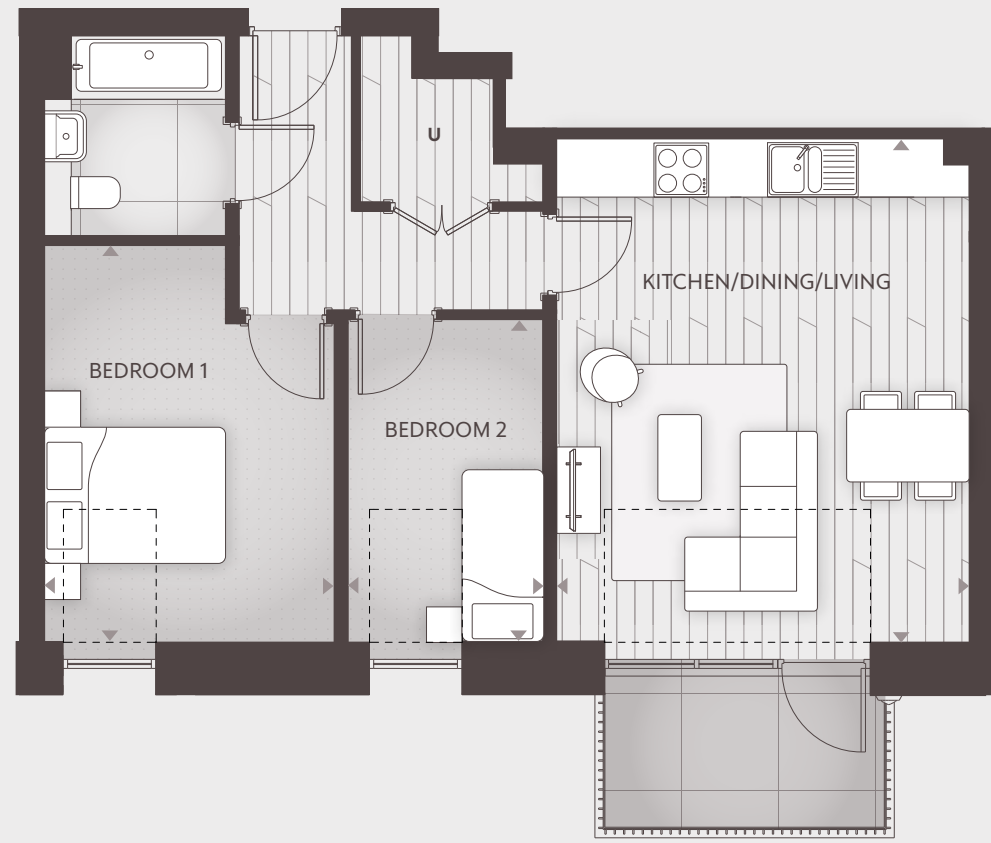
Internal Finish Specification **S** = Silver Kitchen Specification **G** = Gold

J = Juliet Balcony U = Utility Cupboard

Note: - these dimensions are accurate to within +/- 50mm. They are not intended to be used for carpet sizes, appliance spaces or items of furniture. All dimensions taken to the widest point. Kitchen layouts are indicative.

TWO BEDROOM APARTMENT - TYPE FT-41

BUILDING C



Total Internal Area

62m² (667 ft²)

Kitchen/Dining/Living

5556mm x 4553mm

Bedroom 1

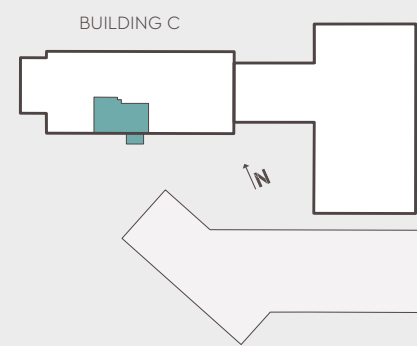
4383mm x 3195mm

Bedroom 2

3622.5mm x 2150mm

Floor Apt. No. Spec

4th C.04.05 S+ G



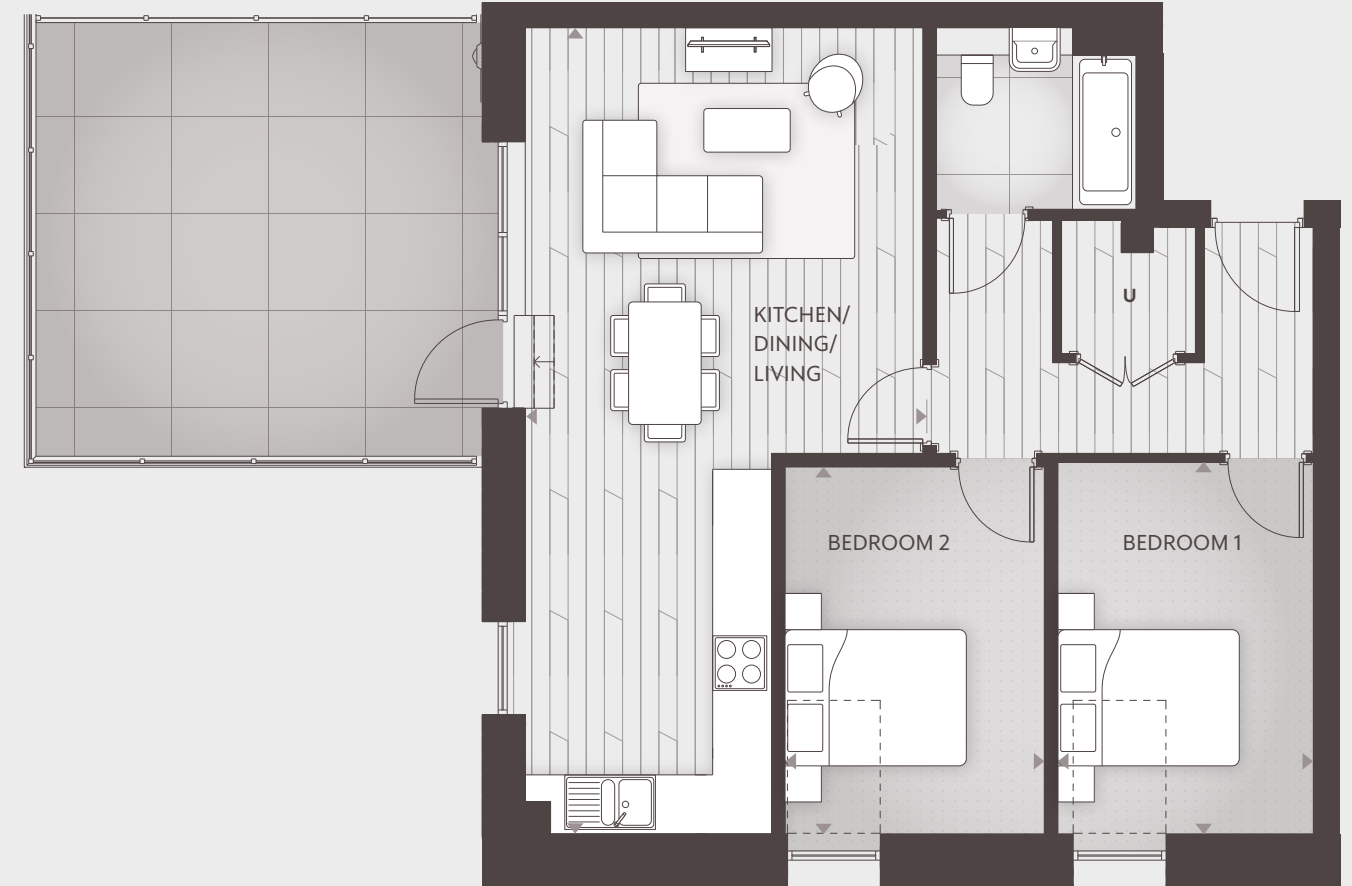
Internal Finish Specification S+ = Silver Plus Kitchen Specification G = Gold

--- Rooflight U = Utility Cupboard

Note: - these dimensions are accurate to within +/- 50mm. They are not intended to be used for carpet sizes, appliance spaces or items of furniture. All dimensions taken to the widest point. Kitchen layouts are indicative.

TWO BEDROOM APARTMENT - TYPE FT-42

BUILDING C



Total Internal Area

73m² (786 ft²)

Kitchen/Dining/Living

8883mm x 4381mm

Bedroom 1

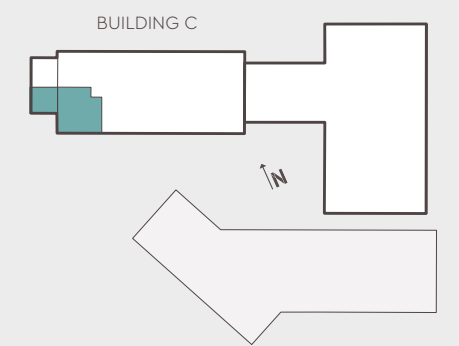
4093mm x 2814.5mm

Bedroom 2

4043mm x 2856mm

Floor Apt. No. Spec

4th C.04.06 S+ G



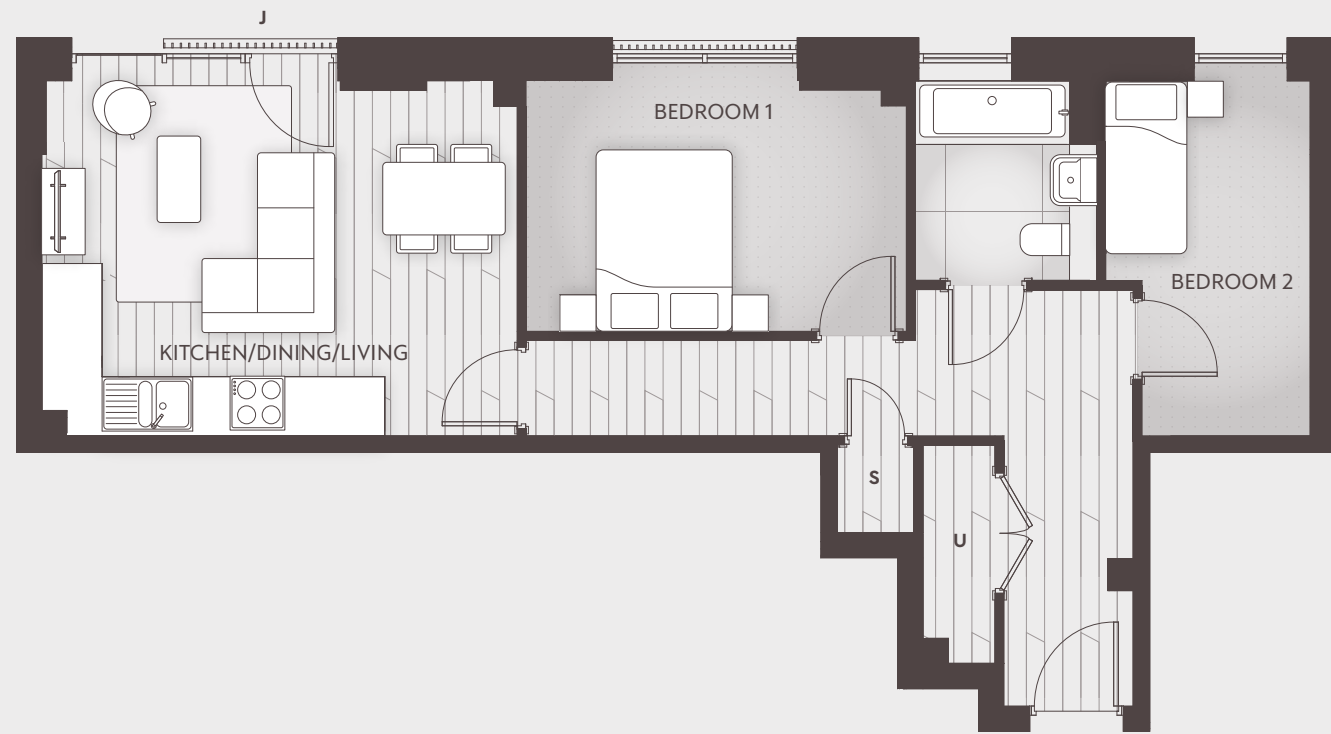
Internal Finish Specification S+ = Silver Plus Kitchen Specification G = Gold

--- Rooflight U = Utility Cupboard

Note: - these dimensions are accurate to within +/- 50mm. They are not intended to be used for carpet sizes, appliance spaces or items of furniture. All dimensions taken to the widest point. Kitchen layouts are indicative.

TWO BEDROOM APARTMENT - TYPE FT-72

BUILDING C



Total Internal Area

62m² (667 ft²)

Kitchen/Dining/Living

5238mm x 3910.5mm

Bedroom 1

4190mm x 2760.5mm

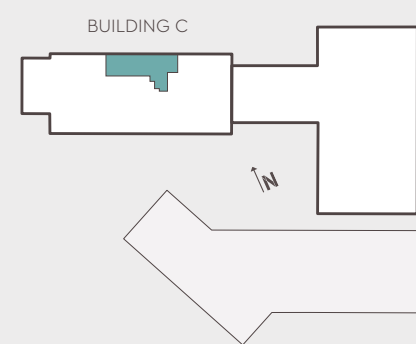
Bedroom 2

3910.5mm x 2250mm

Floor Apt. No. Spec

3rd C.03.01 S G

2nd C.02.01 S G



Internal Finish Specification **S** = Silver Kitchen Specification **G** = Gold

J = Juliet Balcony U = Utility Cupboard S = Storage

DUPLEX APARTMENTS

BUILDING C

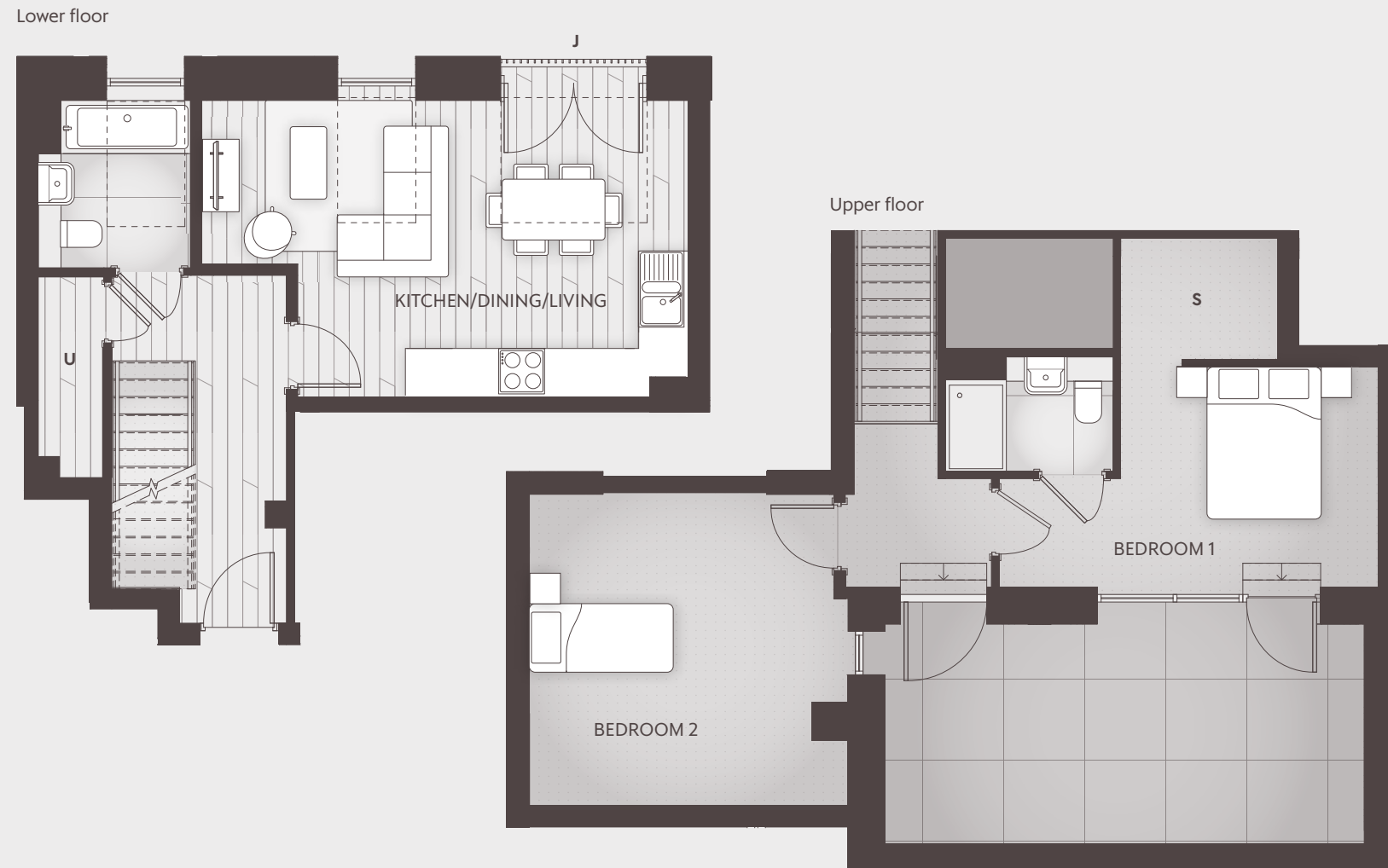
McARTHUR'S YARD

McARTHUR'S YARD



TWO BEDROOM DUPLEX APARTMENT - TYPE DT-04

BUILDING C



Total Internal Area

84.3m² (907 ft²)

Kitchen/Dining/Living

6390mm x 3910.5mm

Bedroom 1

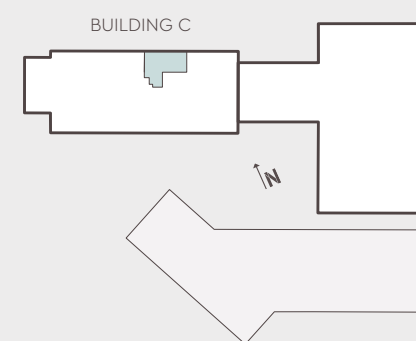
4982.5mm x 2900.5mm

Bedroom 2

4190.5mm x 2777.5mm

Floor Apt. No. Spec

4th & 5th C.04.01 S+ G



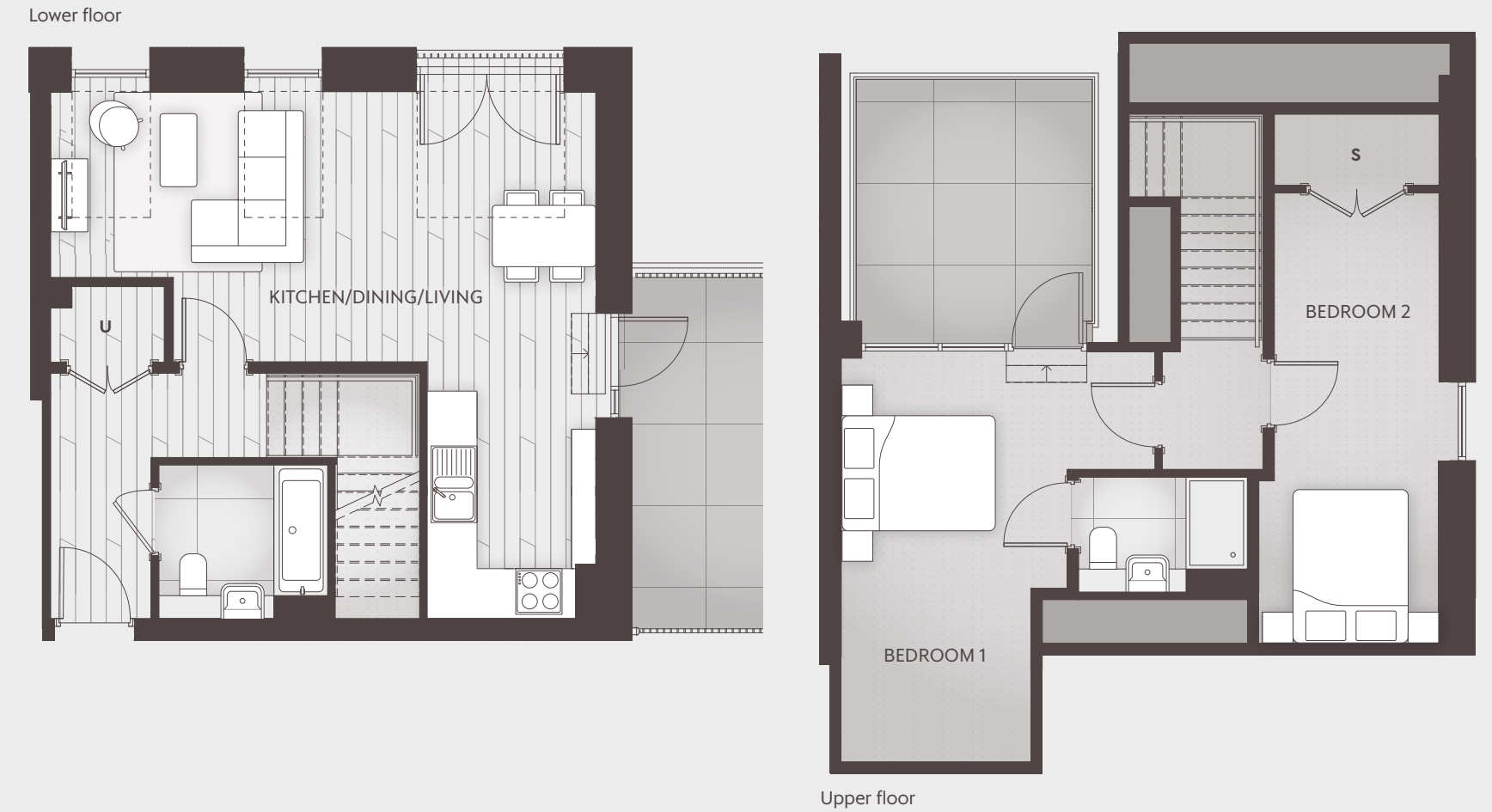
Internal Finish Specification S+ = Silver Plus Kitchen Specification G = Gold

J = Juliet Balcony --- Rooflight U = Utility Cupboard S = Storage

Note: - these dimensions are accurate to within +/- 50mm. They are not intended to be used for carpet sizes, appliance spaces or items of furniture. All dimensions taken to the widest point. Kitchen layouts are indicative. Layout subject to planning change.

TWO BEDROOM DUPLEX APARTMENT - TYPE DT-05

BUILDING C



Total Internal Area

90.2m² (971 ft²)

Kitchen/Dining/Living

7108mm x 6870.5mm

Bedroom 1

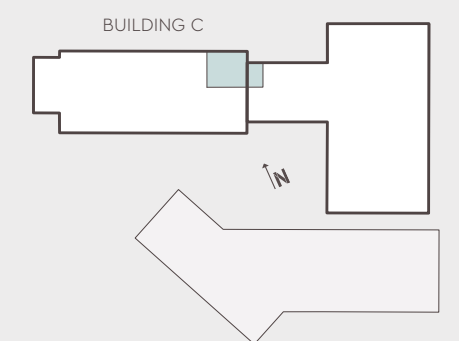
4087.5mm x 3900.5mm

Bedroom 2

5205mm x 2350mm

Floor Apt. No. Spec

4th & 5th C.04.02 S+ G



Internal Finish Specification S+ = Silver Plus Kitchen Specification G = Gold

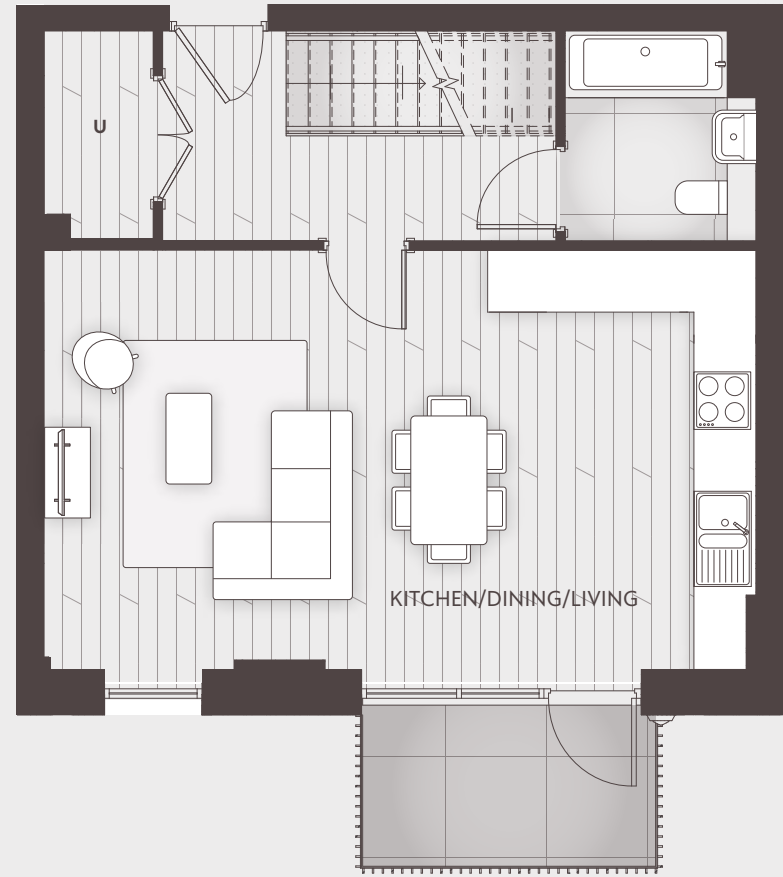
J = Juliet Balcony --- Rooflight U = Utility Cupboard S = Storage

Note: - these dimensions are accurate to within +/- 50mm. They are not intended to be used for carpet sizes, appliance spaces or items of furniture. All dimensions taken to the widest point. Kitchen layouts are indicative. Layout subject to planning change.

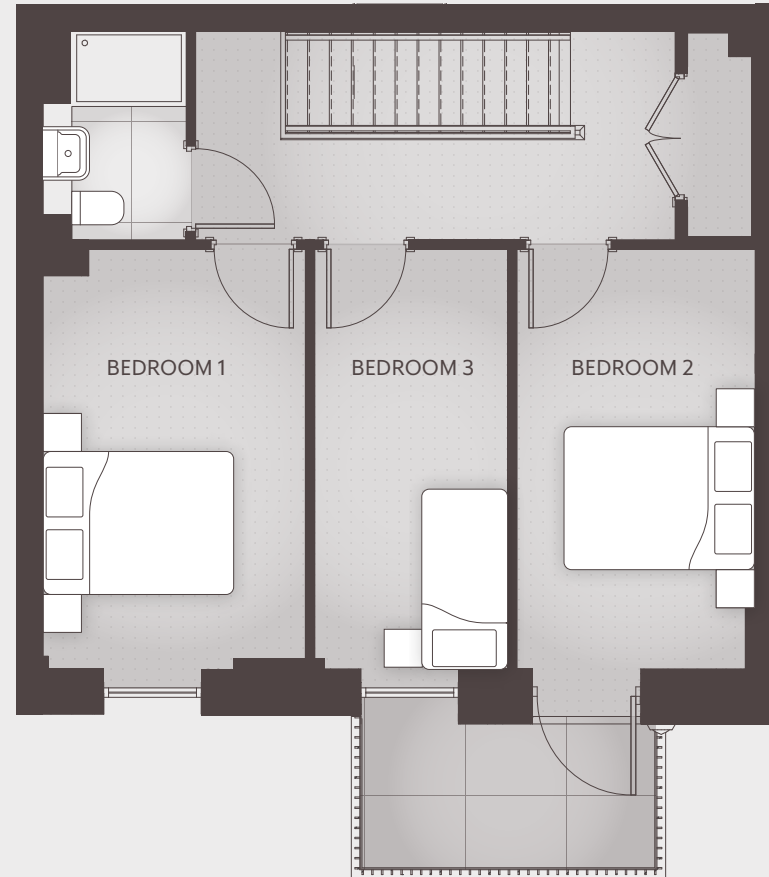
THREE BEDROOM DUPLEX APARTMENT - TYPE DT-01

BUILDING C

Lower floor



Upper floor



Total Internal Area

100m² (1076 ft²)

Kitchen/Dining/Living

7473mm x 4403.5mm

Bedroom 1

4403.5mm x 2750mm

Bedroom 2

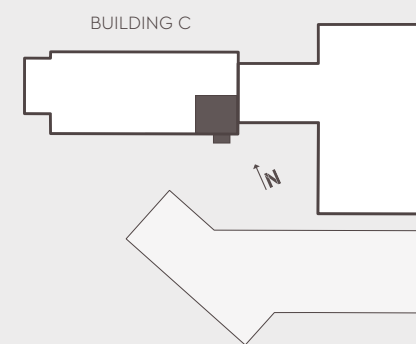
4403.5mm x 2500mm

Bedroom 3

4403.5mm x 2023mm

Floor Apt. No. Spec

1st & 2nd C.01.04 S+ G



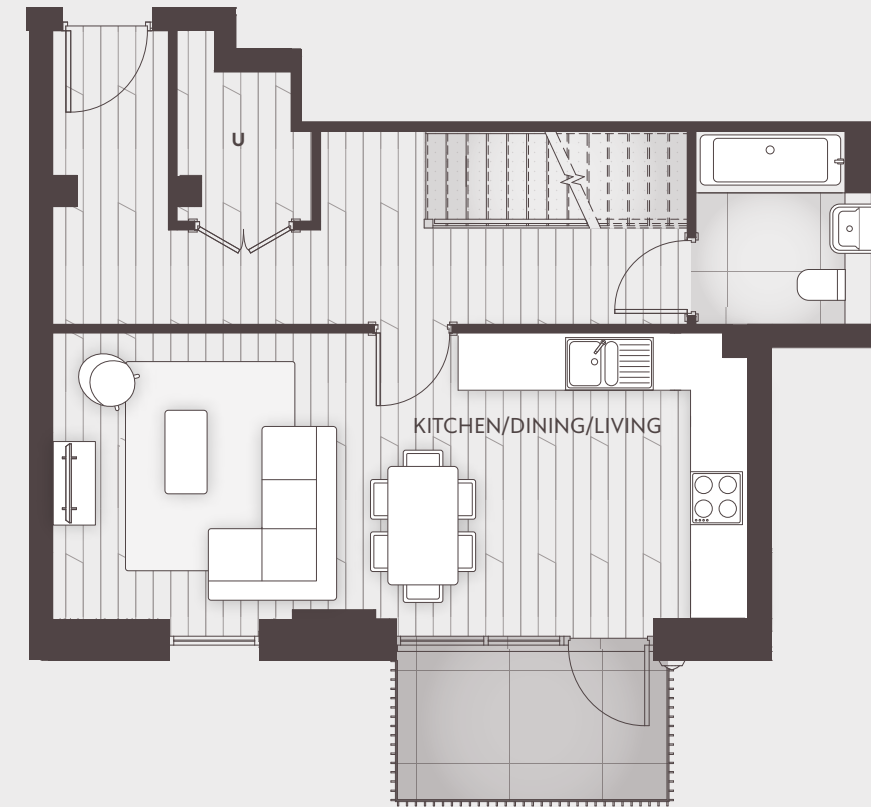
Internal Finish Specification S+ = Silver Plus Kitchen Specification G = Gold

U = Utility Cupboard

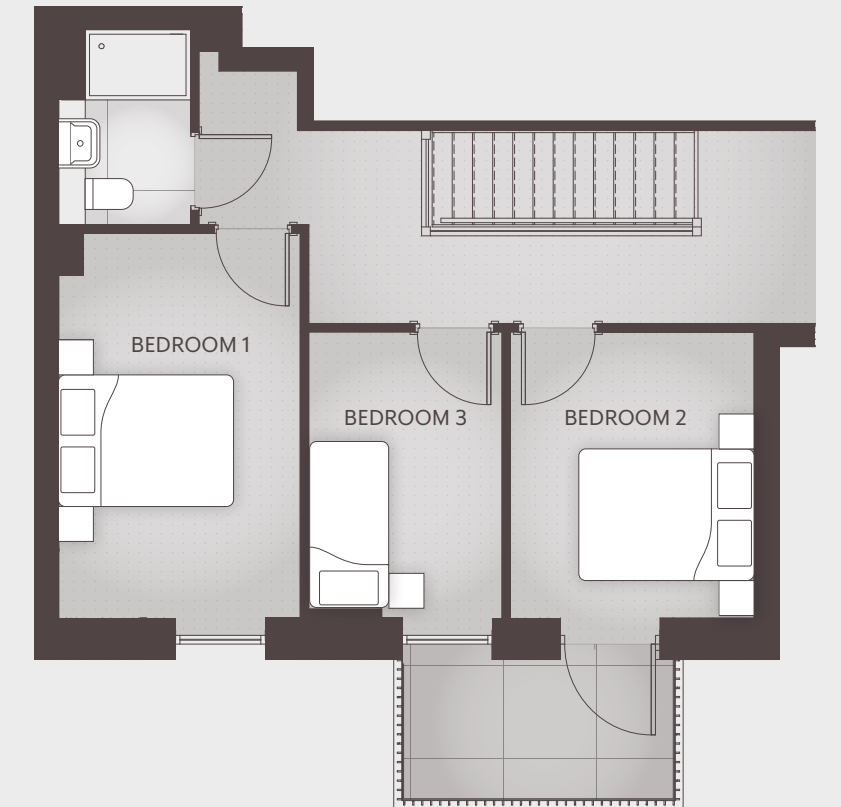
THREE BEDROOM DUPLEX APARTMENT - TYPE DT-02

BUILDING C

Lower floor



Upper floor



Total Internal Area

99m² (1066 ft²)

Kitchen/Dining/Living

7923.5mm x 3256.5mm

Bedroom 1

4383.5mm x 2750mm

Bedroom 2

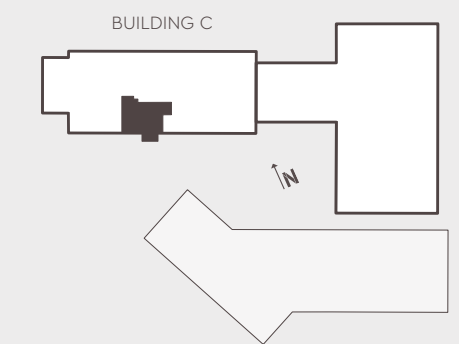
3256.5mm x 2773.5mm

Bedroom 3

3256.5mm x 2200mm

Floor Apt. No. Spec

1st & 2nd C.01.06 S+ G



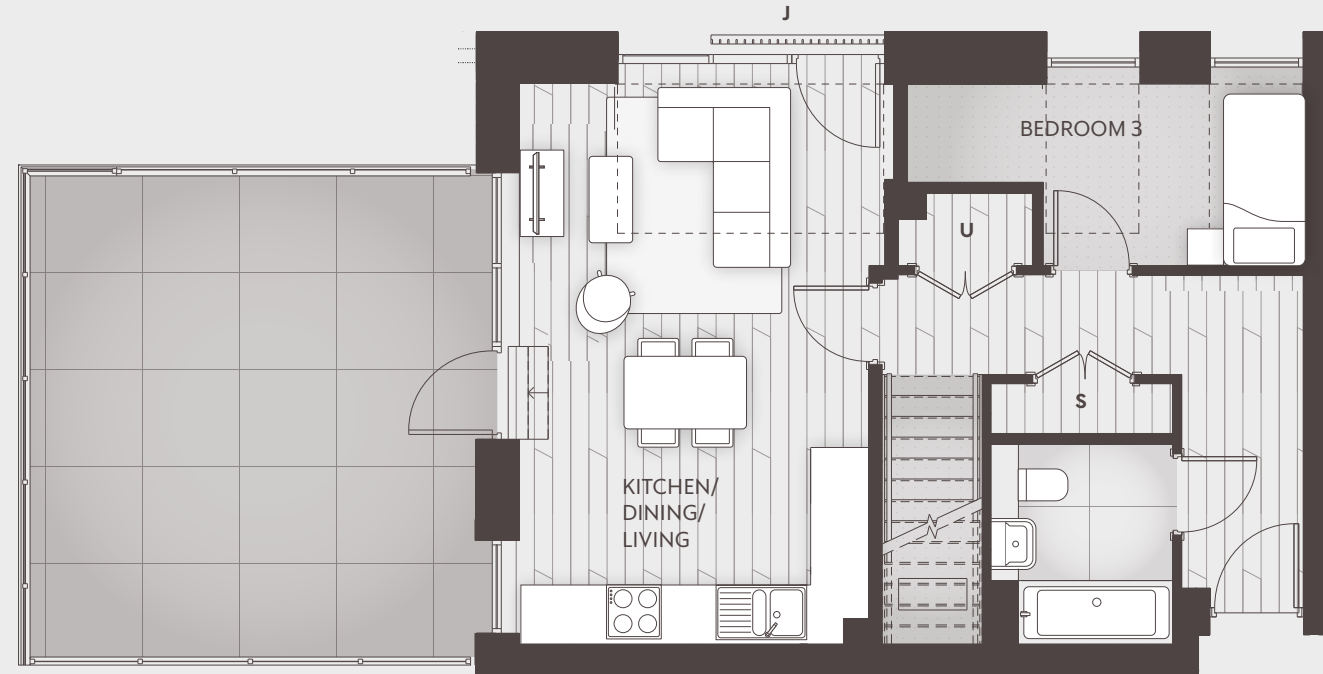
Internal Finish Specification S+ = Silver Plus Kitchen Specification G = Gold

U = Utility Cupboard

THREE BEDROOM DUPLEX APARTMENT - TYPE DT-03

BUILDING C

Lower floor



Total Internal Area

129.4m² (1393 ft²)

Kitchen/Dining/Living

6170.5mm x 4126.5mm

Bedroom 1

5328mm x 3849mm

Bedroom 2

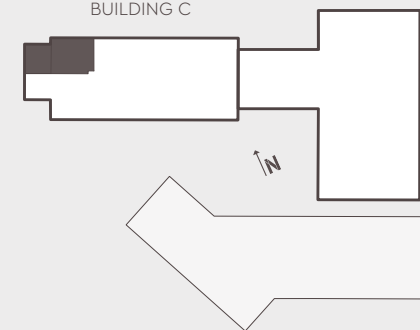
6134mm x 4854mm

Bedroom 3

4364mm x 2000.5mm

Floor	Apt. No.	Spec
4th & 5th	C.04.07	S+ G

BUILDING C



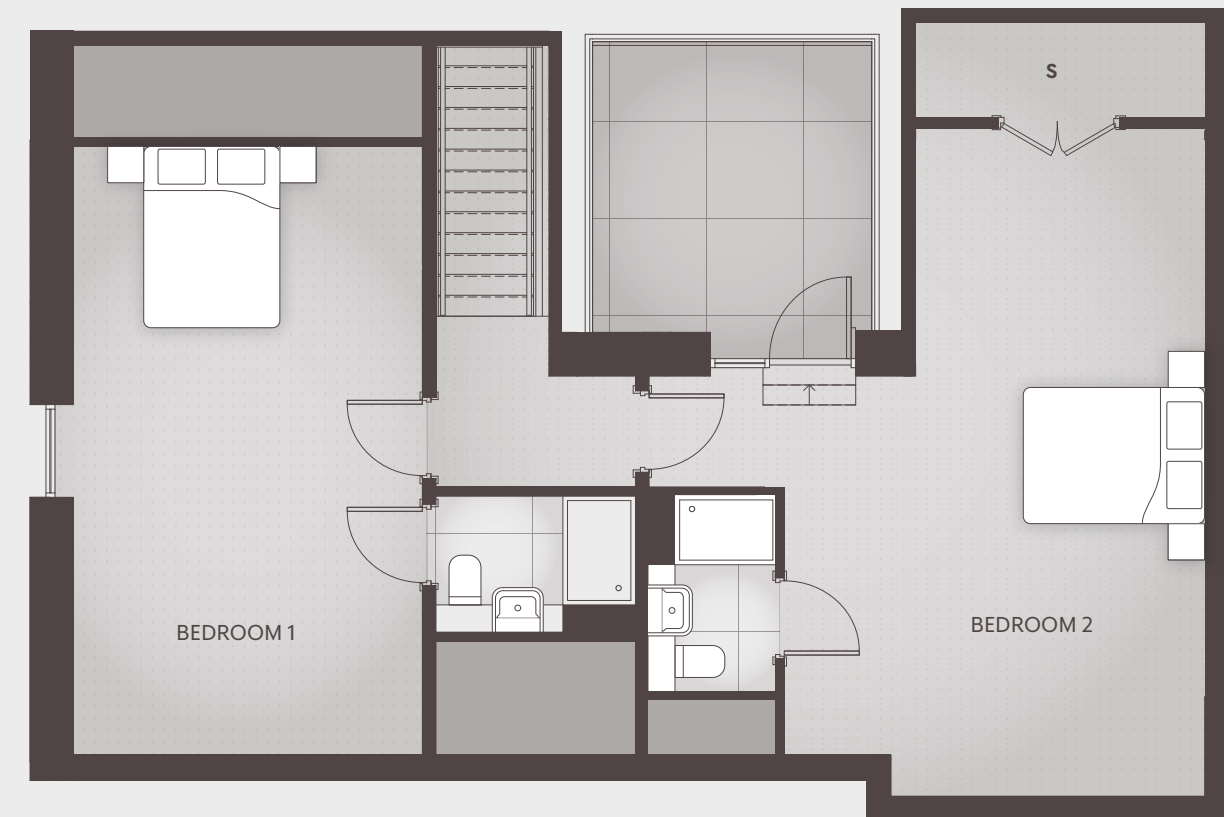
Internal Finish Specification **S+** = Silver Plus Kitchen Specification **G** = Gold

J = Juliet Balcony --- Rooflight U = Utility Cupboard S = Storage

THREE BEDROOM DUPLEX APARTMENT - TYPE DT-03

BUILDING C

Upper floor



SPECIFICATION

ELEGANT LIVING ON THE HARBOURSIDE

Kitchens

G GOLD

- Contemporary handleless cabinets by Symphony in Pearl Grey
- 20mm Caesarstone countertop in Snow with matching upstand & White glass splashback to hob
- Stainless steel 1.5 sink with chrome Blanco Envoy mixer tap
- LED strip lighting in warm white under wall cabinets

Appliances

S+ SILVER PLUS

- Kitchen appliances including Bosch integrated oven, ceramic hob and SMEG hood
- Integrated Zanussi dishwasher and fridge/freezer

S SILVER

- Kitchen appliances including Zanussi integrated oven, ceramic hob and SMEG hood
- Integrated Zanussi dishwasher and fridge/freezer

SPECIFICATION CONTINUED

Internal finishes

S+ SILVER PLUS

Bathroom

- Contemporary white Ideal Standard WC with Ideal Standard flush plate in chrome
- Semi recessed white Ideal Standard counter-top sink with chrome Hansgrohe mixer tap
- Composite vanity top in Egger Black Havanna Pine (or equivalent)
- Contemporary Ideal Standard bath with bath panel to match vanity top
- Full height Steel tiling around bath with upstand where required and contrasting Steel floor tiles
- Hansgrohe thermostatic shower mixer over bath with clear glass bath screen
- Bathrooms will benefit from under basin storage, shaver socket and chrome heated towel rail

En Suite

- Contemporary white Ideal Standard wall mounted WC with Ideal Standard flush plate in chrome
- Semi recessed white Ideal Standard counter-top sink with chrome Hansgrohe mixer tap
- Composite vanity top in Egger Black Havanna Pine (or equivalent)
- Low rise shower tray with Hansgrohe thermostatic shower mixer, rail and shower head with clear glass shower screen
- En suites will benefit from under basin storage, shaver socket and chrome heated towel rail

Standard

- Walls and ceilings painted with matt finish in white
- Architraves and skirting boards finished in white satinwood
- Dusty Grey apartment entrance doors with white interior. Internal doors, including storage cupboard doors painted white, fitted with satin stainless steel ironmongery
- Amtico LVT flooring to hallway, kitchen, living and dining area in White Ash with carpets to bedrooms and duplex stairs and landings in Light Grey
- Downlights to hallway, kitchen, living, dining area, bathroom and en suite with pendant light fitting to bedrooms
- Two switched twin USB sockets to main bedroom and one twin USB socket to kitchen
- All in one Deta Slimline media plate with two twin sockets, TV, HDMI, Data, Telephone, coax
- High level power socket and TV ariel with HDMI connection to low level sockets
- Smoke, heat and CO alarms
- Video entry system to each apartment
- Wood veneer apartment entrance door in Dusty Grey, spy hole, multi-point lock and chain
- Apartments will feature wall mounted radiators with digital thermostat
- All homes will benefit from a 2-year Guinness Homes build warranty

Internal finishes

S SILVER

Bathroom

- Contemporary white Ideal Standard WC with Ideal Standard flush plate in chrome
- Semi recessed white Ideal Standard counter-top sink with chrome Hansgrohe mixer tap on laminate vanity top in Dark Mountain Oak
- Contemporary Ideal Standard bath with bath panel
- Full height Steel tiling around bath with upstand where required and contrasting Steel floor tiles
- Hansgrohe thermostatic shower mixer over bath with clear glass bath screen
- Bathrooms will benefit from under basin storage, shaver socket and chrome heated towel rail

En Suite

- Contemporary white Ideal Standard wall mounted WC with Ideal Standard flush plate in chrome
- Semi recessed white Ideal Standard counter-top sink with chrome Hansgrohe mixer tap on laminate vanity top in Dark Mountain Oak
- Low rise shower tray with Hansgrohe thermostatic shower mixer, rail and shower head with clear glass shower screen
- En suites will benefit from under basin storage, shaver socket and chrome heated towel rail

Standard

- Walls and ceilings painted with matt finish in white
- Architraves and skirting boards finished in white satinwood
- Dusty Grey apartment entrance doors with white interior. Internal doors, including storage cupboard doors painted white, fitted with satin stainless steel ironmongery
- Amtico LVT flooring to hallway, kitchen, living and dining area in White Ash with carpets to bedrooms and duplex stairs and landings in Light Grey
- Downlights to hallway, kitchen, living, dining area, bathroom and en suite with pendant light fitting to bedrooms
- Two switched twin USB sockets to main bedroom and one twin USB socket to kitchen
- All in one Deta Slimline media plate with two twin sockets, TV, HDMI, Data, Telephone, coax
- High level power socket and TV ariel with HDMI connection to low level sockets
- Smoke, heat and CO alarms
- Video entry system to each apartment
- Wood veneer apartment entrance door in Dusty Grey, spy hole, multi-point lock and chain
- Apartments will feature wall mounted radiators with digital thermostat
- All homes will benefit from a 2-year Guinness Homes build warranty

The specification of the properties is correct at the date of print but may change as building works progress. Any images are indicative of the anticipated quality and style of the specification and may not represent the actual furnishings and fittings of the properties. Unless specifically incorporated in writing into the sales contract the specification is not intended to form part of any offer, contract, warranty or representation and should not be relied upon as a statement or representation of fact.

GUINNESS HOMES BUILDING FOR THE FUTURE

We're one of the biggest housing providers in the country, with over 66,000 homes across the UK and over 140,000 customers.

We're focused on improving people's lives by building new homes and improving services, and we've been doing it for 130 years. We combine our deep heritage with our forward-thinking ambition and commitment to sustainability. We recognise that the world around us is changing, and while our purpose will always remain the same, we're constantly evolving to make sure we're building energy-efficient homes that last for future generations.



Computer generated image for illustrative purposes only.

LOVE HARBOURSIDE LIVING

MEATHUR'S YARD

0300 456 0522 | sales@guinness.org.uk | www.guinnesshomes.co.uk/bristol

Guinness Homes is part of The Guinness Partnership Ltd. Registered office is at 30 Brock Street, Regent's Place, London, NW1 3FG.

These particulars do not constitute any part of an offer or contract. Any intending purchaser must satisfy themselves by inspection as to the correctness of each of the statements contained in these particulars. Computer generated images are for illustration purposes only. Exterior and interior photography is of the development show home. Features such as windows, brick and other materials may vary. Dimensions and floor plans are designed to give you a general indication of the layout and should never be used for curtains, carpets, furniture, or appliance spaces. Landscaping is shown for illustrative purposes only. Map not to scale. Plans are indicative only. Your home is at risk if you do not keep up the rent and mortgage repayments. Guinness Homes and The Guinness Partnership support the development of mixed tenure communities and are proud to provide homes for shared ownership and private sale.

The tenure of these homes may change subject to demand. Details correct at time of going to print. October 2024.



McArthur's Yard, Gas Ferry Road, Bristol BS1 6UN

0117 910 0360 | bristolnewhomes@savills.com

Savills are the acting agent on behalf of Guinness Homes for Outright Sale homes at McArthur's Yard.

